

# Wappingers Central School District 2018-2019 School Tax Rates

## *Placing Students First*

*The mission of the Wappingers Central School District is to empower all of our students with the competencies and confidence to challenge themselves, to pursue their passions and to realize their potential while growing as responsible members of their community.*

### WE BELIEVE...

*...the collaboration needed for meaningful change is built on honesty, trust and respect.*

*...embracing diversity in all its forms enriches the human experience.*

*...health and quality of a community are dependent on the responsible contributions of all its members.*

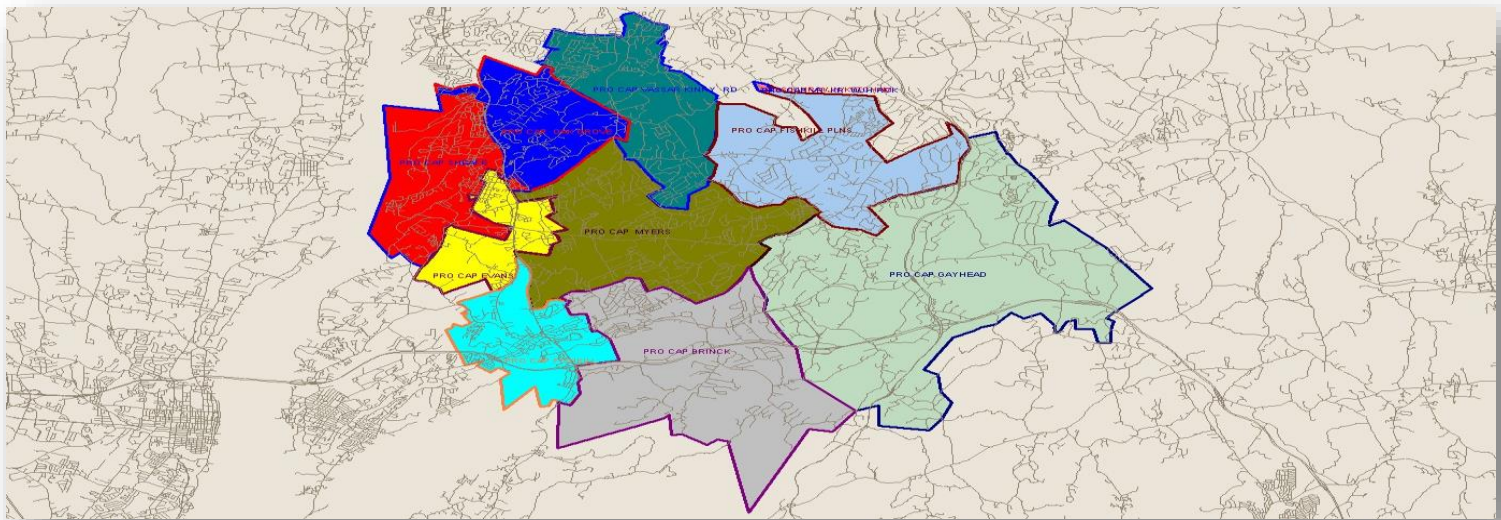
*...that active and continuous learning is essential for individuals and communities to flourish.*

*...everyone can realize their potential and when they do, both they and the community thrive.*



# Gaining a Better Understanding of School Tax Rates

- *Assessments* are the valuation of real property including exempt properties and whether such property is subject to valuation by each Town's assessor.
- *Equalization Rates* are the percentage of full values set by NYS at which the taxable real property for a municipality is assessed.
- The *Tax Levy* is the amount received in property taxes.



## ➤ 2018-2019 School Tax Rates

- The “tax cap” applies to the tax levy – not to tax rates by town or a taxpayer’s bill
- The legislation caps the tax levy limit at 2.0% for 2018-2019
  - Exclusions for 2018-2019 – Capital Levy only
- WCSD met the requirements for STAR refunds through government efficiency plans
- WCSD participated in the County Executives Shared Services Panel
- School Budget & Tax documents available on website



*We believe embracing diversity in all its forms enriches the human experience.*

# 2018-2019 Taxpayer Approved Budget

## \$231,312,631

### *Within the Tax Cap*

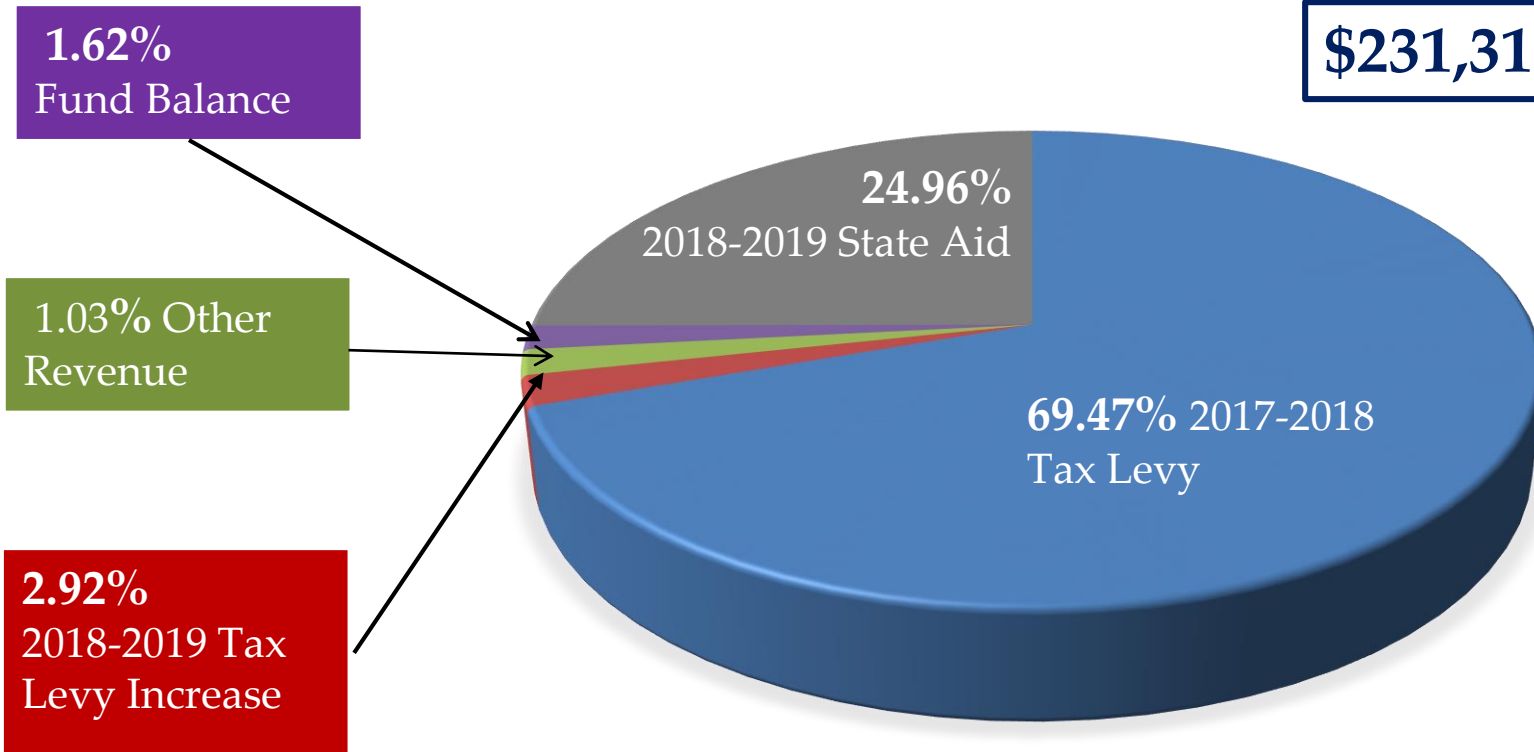
TAX LEVY		BUDGET	
2017-2018 Approved Tax Levy	\$160,936,353	2017-2018 Approved Budget	\$225,181,606
2018-2019 Proposed Tax Levy	\$165,627,869	2018-2019 Proposed Budget	\$231,312,631
Levy to Levy \$	\$4,691,516	Budget to Budget \$	\$6,131,025
Levy to Levy %	2.92%	Budget to Budget %	2.72%



*We believe the health and quality of a community are dependent on the responsible contributions of all its members.*

# 2018-2019 Revenue Summary

**\$231,312,631**



*We believe that the active and continuous learning is essential for individuals and communities to flourish.*

## ➤ How are school taxes calculated?

### Assessments

- Each town assessor determines the valuation of real property including exempt properties and whether such property is subject to valuation
- Clergy and firefighter exemptions remain in existence in 2018-2019
- Tax grievance day is in May for each town
- Final assessments received from each town in Mid- August and broken down by Homestead & Non-Homestead



*We believe everyone can realize their potential and when they do, both they and the community thrive.*

## ➤ How are school taxes calculated?

### Equalization Rates

- Percentage of full values at which the taxable real property for a municipality is assessed
- Used to create uniform assessments and rates among municipalities (ie: market value = selling price)
- Finalized by the Office of Real Property Tax Services in mid-August
- All towns have rate of 100% (fully equalized) with the exception of Philipstown at 46.95%



*We believe the collaboration needed for meaningful change  
is built on honesty, trust and respect.*

## ➤ How are school taxes calculated?

### Tax Levy

- Total amount of money to be raised by the school district after all other sources of revenue are identified
- The portion of the budget funded by property taxes
- The tax cap legislation has changed the budget process with the tax levy at the forefront of the conversations and planning





## ➤ 2017-2018 & 2018-2019 Tax Levy

2018-2019 Avg  
Homestead tax  
rate per \$1,000  
\$ 16.64

**No change  
from  
2017-2018**

2018-2019  
Avg Non-  
Homestead tax  
rate per \$1,000  
\$ 22.73

**.09% decrease  
from  
2017-2018**

2017-2018 Approved Tax Levy	2018-2019 Approved Tax Levy
\$160,936,353	\$165,627,869
2017-2018 to 2018-2019 \$ Increase	2017-2018 to 2018-2019 % Increase
\$4,691,516	2.92%

	Levy Amount
2015-2016	\$156,396,228
2016-2017	\$159,426,539
2017-2018	\$160,936,353
2018-2019	\$165,627,869

Levy to  
Levy  
increase  
is within  
the tax  
cap!

## ➤ School Tax Rates 2018-2019

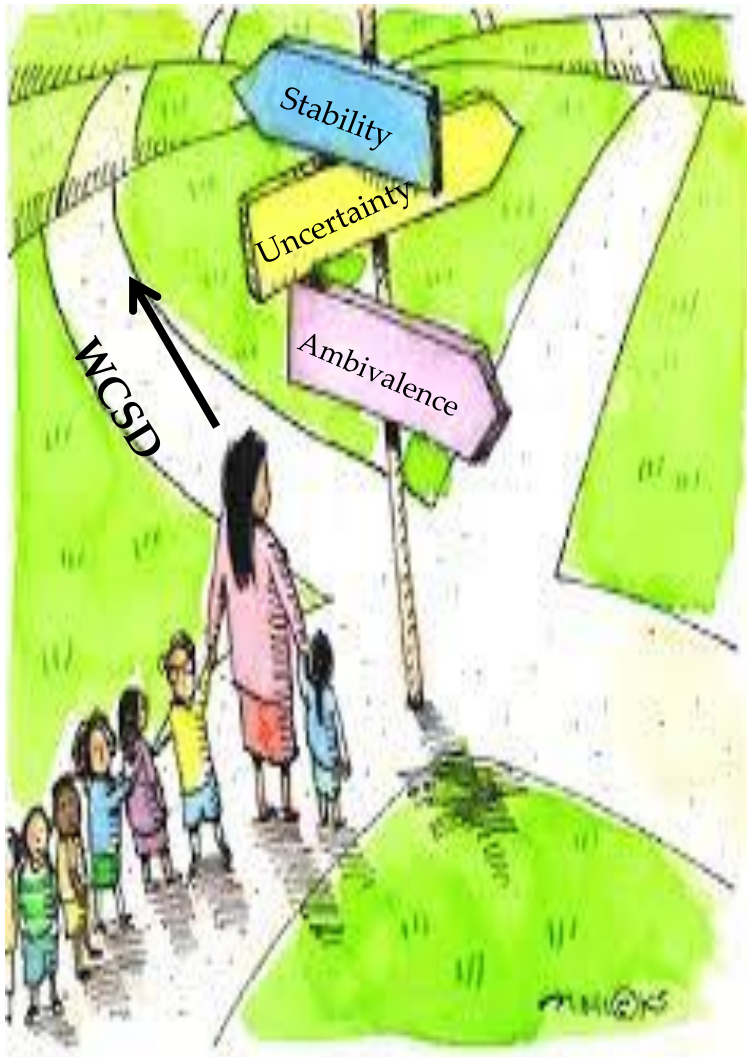
- Comparison of the taxable assessed values and tax rates over recent years reflect a minimal change for homestead taxpayers (Dutchess County & inclusive of clergy and firefighter exemption) and show **stability and small growth**.

Town	2016-2017 Total Taxable Assessed	2017-2018 Total Taxable Assessed	2018-2019 Total Taxable Assessed	2016-2017 to 2017-2018 % Difference	2017-2018 to 2018-2019 % Difference
East Fishkill	\$2,674,480,336	\$2,694,537,125	\$2,754,204,782	.75%	2.21%
Fishkill	\$1,133,593,680	\$1,154,212,083	\$1,196,483,828	1.82%	3.66%
LaGrange	\$97,937,912	\$98,340,915	\$99,429,990	.41%	1.11%
Poughkeepsie	\$815,138,066	\$818,104,600	\$836,040,533	.36%	2.19%
Wappingers	\$1,729,441,347	\$1,789,185,207	\$1,895,748,349	3.45%	5.96%



*We believe that the active and continuous learning is essential for individuals and communities to flourish.*

# ➤ WCSD is Navigating Our Way ...



## WCSD's path

*Steps taken....*

- Fiscally responsible balanced budgets consistently prepared and approved by the local community
- Solid property values by the Towns
- Consistent NYS Equalization Rates
- Minimal increases in tax levys

*Result in.....*

*Stability in tax rates from year to year  
&  
the sustainability and enhancement of student  
programs and District infra-structure*

## ➤ Historical Data on WCSD School Taxes

Past School Tax Rate presentations can be viewed at:

### 2017-2018 Tax Rates

[https://www.boarddocs.com/ny/wcsd/Board.nsf/files/AQHNLD54C5DA/\\$file/BOE%20memo%202017-2018%20Tax%20Rates.pdf](https://www.boarddocs.com/ny/wcsd/Board.nsf/files/AQHNLD54C5DA/$file/BOE%20memo%202017-2018%20Tax%20Rates.pdf)

### 2016-2017 Tax Rates

[https://www.boarddocs.com/ny/wcsd/Board.nsf/files/AD6FTY40BBAE/\\$file/2016-2017%20Taxrate%20Presentation.pdf](https://www.boarddocs.com/ny/wcsd/Board.nsf/files/AD6FTY40BBAE/$file/2016-2017%20Taxrate%20Presentation.pdf)

### 2015-2016 Tax Rates

[http://www.boarddocs.com/ny/wcsd/Board.nsf/files/9ZLGJS440225/\\$file/20152016%20taxrate%20presentation.pdf](http://www.boarddocs.com/ny/wcsd/Board.nsf/files/9ZLGJS440225/$file/20152016%20taxrate%20presentation.pdf)

### 2014-2015 Tax Rates

[http://www.boarddocs.com/ny/wcsd/Board.nsf/files/9N8VAU6536B1/\\$file/tax%20prsntn.pdf](http://www.boarddocs.com/ny/wcsd/Board.nsf/files/9N8VAU6536B1/$file/tax%20prsntn.pdf)



*We believe everyone can realize their potential and when they do, both they and the community thrive.*