

Capital Committee Meeting Minutes 1/31/2014

Attendees: Ron Broas, John Lumina, Maureen Primrose, Craig Rebecca, John Sharkey, Marilyn Shultz, Antonietta St. George and Philip Zemke

Craig Rebecca of Ameresco Summarized Energy Performance Project

By using a matrix; red x's explained where Ameresco expanded the project with the help of the district.

Highlights of Energy Performance Project:

- Replaced emergency lighting with flood lights; Ron Broas requested upgraded emergency lights; this saved the District \$50,000 of near future costs.
- Wappingers Junior High had new stage lighting installed, this made a huge difference.
- Craig brought a sample of new LED Lighting that was installed in classroom 167 Tech Room at John Jay High School.
- Ameresco provided new LED fixtures to replace dark areas of Wappingers Junior High School with the help of the district; this area is now well lit at night.
- As an addition, Ameresco added lights in main entrance of Roy C. Ketcham and John Jay; they were replaced with 30 watt LED, looks beautiful, lights will stay on for 90 minutes after power outage.
- At Myers Elementary, Ameresco paid TBS to install new controls for boiler room, consistent with rest of district.
- Ameresco donated pipe insulation to keep energy savings down for Evans Elementary. The insulation was removed over the summer during the abatement; conversion from steam to heating with hot water won't be completed until summer 2015.
- Ameresco provided door sweeps and weather stripping at Fishkill Plains. (not part of scope)
- New gas service was added to Fishkill boiler room. (not part of the original scope)
- New gas service was added to Myers (not part of original scope) District Grounds Crew installed gas lines.

Reviewed EMS Computer Program for WCSD

- Snapshots of EMS computer program for WCSD.
- Schools are programmed heat during the day; heat is lowered after 8:00pm.
- Can be programmed holiday's weekends, snow days and special events. Boiler alarms (boiler failure) emergency contact is emailed.
- Program provides monitoring onsite and from afar.
- A major preventative maintenance program needs to be implemented to keep systems working properly.
- Ameresco has to guarantee an 18 year pay back and will be monitoring annually.

Savings guarantee starts Jan 2014.

Rhinebeck Architecture – John Sharkey and Phil Zemke

Due to the back-up of approval times at SED, Rhinebeck broke up projects into two phases. Phase 1 is Architectural, SED 3-4 month approval time; Phase 2 is mechanical, SED 6 month approval time. Both phases have been submitted on time and on budget.

Rhinebeck and WCSD had a good meeting with SED this week, submitted phase 2. SED agreed to give immediate approval to demolish bus garage so project can be bid in April. Need old bus garage demolished before school starts back up in September of 2014.

Rhinebeck has written up a Press Release updating the district status of capital projects; committee suggested to include the SED timeline of approval for the district to understand the hold up of projects being started.

Rhinebeck's next meeting with the district will include discussing the scheduling of which projects will be completed this summer.

Next step of series phase 1 is to review school projects; put together bid packages and visit each school.

The Security project was given a verbal approval to start pulling wire; waiting for response from SED if district can get approval to purchase wire. District will hire maintenance mechanics to pull wire which will be reimbursed by SED for the project only. Hopefully these employees will stay on afterward to perform preventative maintenance.

The Visitor Management System is a Security computer program that will be linked to the students Visitor System. Components to include:

- License swipe machine in every school main entrance
- Intercom, panic buttons and electronic locks to multiple doors
- System will print out visitor badge
- Main office greeter will have interface with video intercom. Cameras will be installed inside and out, all classrooms will have phones which will be able to dial 911 and outside calls.
- Cameras will also be installed at the bus garages in the lots; adding to the transportation project.
- Ron and Daren will evaluate each bldg. for security need; they would like to start at Roy C. Ketcham.

District office relocation committee working on District Office Relocation Status

| Ameresco Energy Performance Contract at the Wappingers Central School District | | | | | | | | | | | | | | |
|--|------------------------------|-------------------|-------------------|--|-------------------------|--------------------------|-------------------------|-----------------------------|----------------------|---------------------------|--|--------------------------|-----------------------|------------------------------------|
| Facility | Lighting System Improvements | Lighting Controls | Exterior Lighting | Integrated and New Energy Management Systems | Steam Trap Replacements | Pipe and Tank Insulation | Infiltration Reductions | Vending Machine Controllers | P.C. Load Management | Premium Efficiency Motors | Variable Frequency Drives for HW Pumps | Walk-in Freezer Controls | Destratification Fans | Bioler Replacements & Improvements |
| | 1 | 2 | 3 | 4 | 5 | 6 | 7 | 8 | 9 | 10 | 11 | 12 | 13 | 14 |
| Brinckerhoff ES | X | | X | X | | X | X | X | X | | | | X | |
| James S. Evans ES | X | | | X | X | X | X | X | X | | | | X | |
| Fishkill ES | X | | | X | X | | X | X | X | | | | X | X |
| Fishkill Plains ES | X | | | X | | | X | X | X | X | | | | |
| Gayhead ES | X | | | X | X | X | X | X | X | X | | X | X | |
| Kinry Road ES | X | | | | | X | | X | X | X | | | | |
| Myers Corners ES | X | | | X | | | X | X | X | X | | X | | X |
| Oak Grove ES | X | | | X | | | | X | X | | X | | X | |
| Sheafe Road ES | X | | | X | | | X | X | X | X | X | | | |
| Vassar Road ES | X | | | X | | | | X | X | | | | | |
| Van Wyck JHS | X | | X | X | X | X | X | X | X | | | X | X | X |
| Wappingers JHS | X | X | X | X | X | X | X | X | X | X | | | | |
| John Jay HS | X | X | X | X | X | X | | X | X | X | X | X | | X |
| Roy C. Ketcham HS | X | X | X | | X | X | X | X | X | X | X | | X | |
| Facilities & Operations | X | X | X | X | | | X | X | X | | | | | |
| Bus Garage - Main | X | | | | | | | | X | | | | | |
| Bus Garage - Transportation | X | | | | | | | X | X | | | | | |
| Fishkill Modulares | X | | | X | | | | | X | | | | | |
| Gayhead Modulares | X | | | X | | | | | X | | | | | |
| Van Wyck Modulares | X | | | X | | | | | X | | | | | |

Ameresco Energy Project - Highlights

- ECM #1 - Nearly all exit signs installed with emergency flood-lights;
- ECM #1 - Dramatic improvements at WJHS: stage area & corridors;
- ECM #1 - New LED lighting in classroom 167 at John Jay High School;
- ECM #3 - District & Ameresco worked together to improve the exterior lighting at WJHS
- ECM #3- Main entrance lighting at Ketcham and John Jay added to project, including emergency back-up power at RCK;
- ECM #4 - At Myers, District & Ameresco worked together to upgrade older (“R2”) boiler room controls (not part of original scope);
- ECM #6 - Ameresco provided pipe insulation to the District for Evans while it is converted from steam to heating-hot-water;
- ECM #7 - Door sweeps and weather-stripping installed at Fishkill Plains (not part of the original scope);
- ECM #14 - New gas service was added to the Fishkill boiler room as part of the project (not part of original scope);
- ECM #14 - New gas service was added to the Myers Corners boiler room as part of the project (not part of original scope);

SAVINGS GUARANTEE BEGINS JANUARY 2014.

Wappingers Jr High School
ECM #3 - Exterior Lighting Improvements

very dark area
by boiler room
is now
illuminated by
LED lighting



Low-pressure sodium
pole lights replaced
with LED

New recess LED luminaires
installed under the portico



Hello amerescoView

Alarms

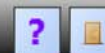
WFSD Brinckerhoff Elementary 1st Floor C

1/30/2014

37.1 °F

2:55 PM

43.0 %RH





Hello amerescoView

Alarms

WFSD Brinckerhoff Elementary Room8

1/30/2014

37.3 °F

2:57 PM

43.0 %RH

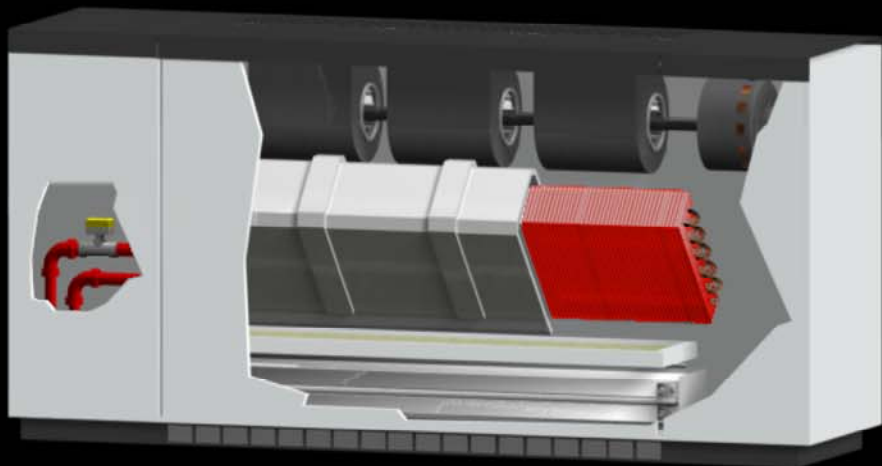


Master Enable

Auto

Advanced Settings

Effective Supply Low Limit SP **65.0 °F**
Supply Temp **59.1 °F**



Valve
20.1 %

Fan
Running
Freeze
Normal

Mixed Dampers
10.0 %

Min Position
10.0 %

| Room8 Unit Control | |
|---------------------|---------------------------------------|
| Room 8 | |
| 70.0 °F | Effective Setpoint |
| | Occ Unocc |
| | Cooling 74.0 °F 85.0 °F |
| | Heating 70.0 °F 55.0 °F |
| 69.9 °F | Current Space Temperature |
| Software Freeze SP | 40.0 °F |
| Effective Occupancy | Occupied |
| Schedule Selector | Schedule D |
| Freeze Reset | Normal |

System Notes

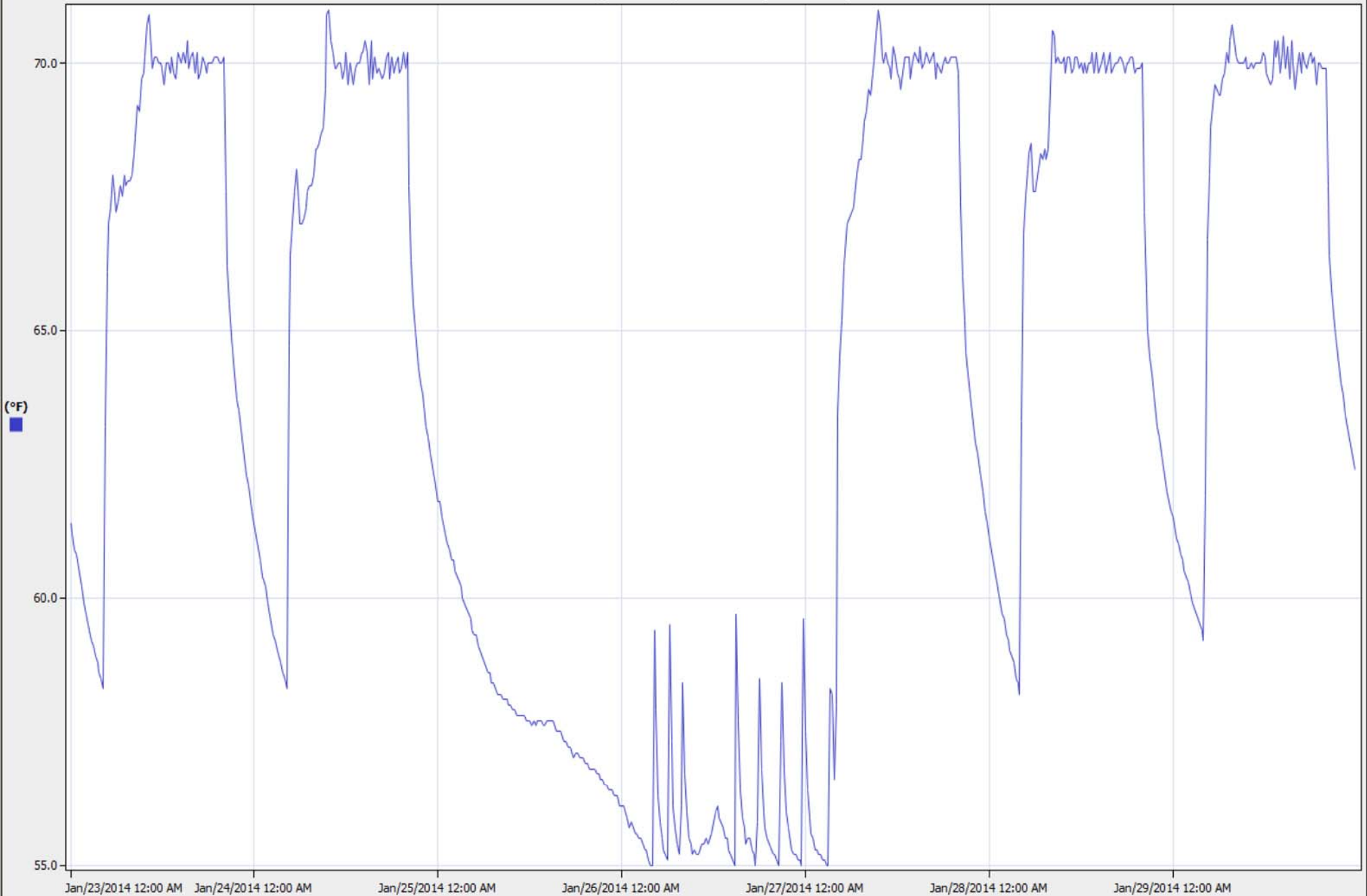
- 1)
- 2)
- 3)
- 4)

FTR Valve
0.0 %



Last 7 Days

WF_BhES01/Room 8 Space Temp





Hello amerescoView

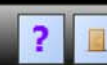
Alarms

Sheaffe Road Elementary Cafe

1/30/2014

3:05 PM

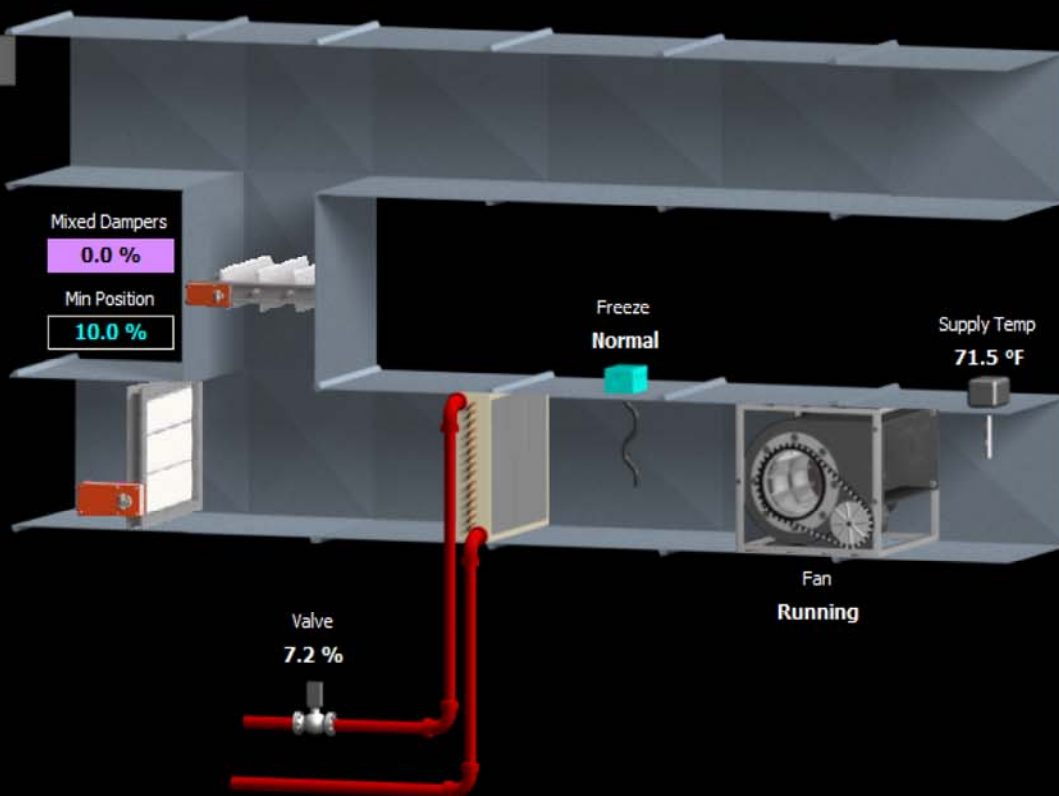
27.0 °F
Clear



Master Enable

Auto

Advanced Settings



| Cafe Unit Control | | | | | | | | | | |
|---------------------|--|---------|-------|-------|---------|---------|---------|---------|---------|---------|
| HV Cafe | | | | | | | | | | |
| 68.0 °F | Effective Setpoint | | | | | | | | | |
| | <table border="1"> <thead> <tr> <th></th> <th>Occ</th> <th>Unocc</th> </tr> </thead> <tbody> <tr> <td>Cooling</td> <td>74.0 °F</td> <td>85.0 °F</td> </tr> <tr> <td>Heating</td> <td>68.0 °F</td> <td>65.0 °F</td> </tr> </tbody> </table> | | Occ | Unocc | Cooling | 74.0 °F | 85.0 °F | Heating | 68.0 °F | 65.0 °F |
| | | Occ | Unocc | | | | | | | |
| Cooling | 74.0 °F | 85.0 °F | | | | | | | | |
| Heating | 68.0 °F | 65.0 °F | | | | | | | | |
| 67.9 °F | Current Space Temperature | | | | | | | | | |
| Software Freeze SP | 40.0 °F | | | | | | | | | |
| Effective Occupancy | Occupied | | | | | | | | | |
| Schedule Selector | Schedule C | | | | | | | | | |
| Freeze Reset | Normal | | | | | | | | | |

System Notes

- 1)
- 2)
- 3)
- 4)