

Here are some chords for you to try out on the keyboard. Use them instead of the 'single finger' chords on your keyboard, to make your accompaniments sound even more interesting.



Key:

M* = minor

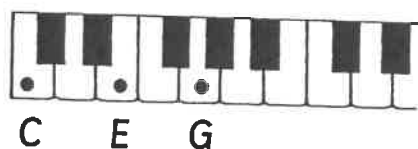


C major

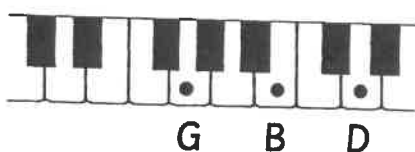
G major

D major

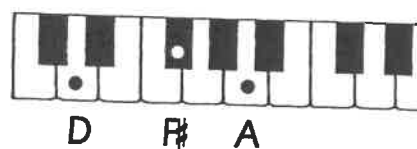
C



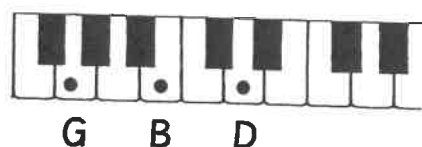
G



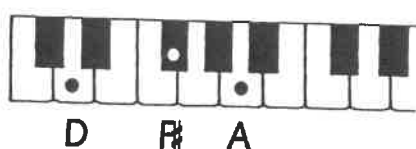
D



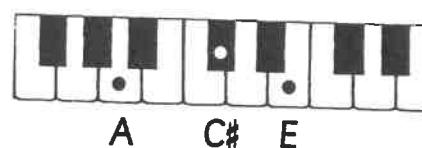
G



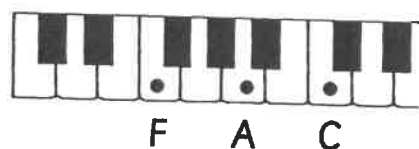
D



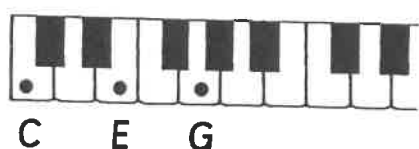
A



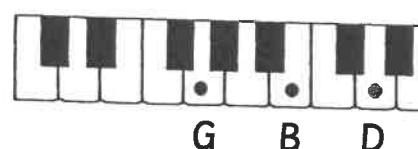
F



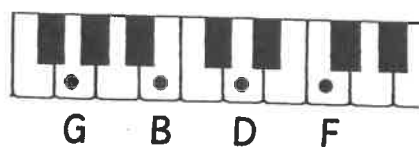
C



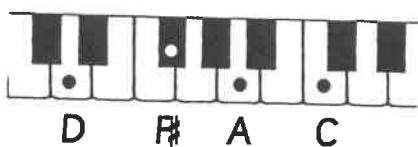
G



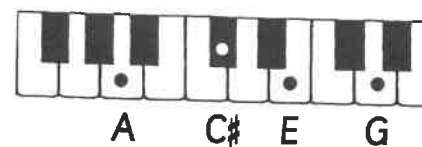
G⁷



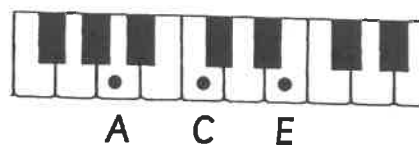
D⁷



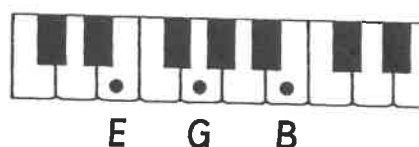
A⁷



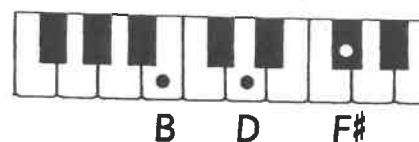
Am*



Em*



Bm*



Name _____

Piano Keyboards

Two-Octave Staff Keyboard

Diagram of a two-octave staff keyboard. The musical staff shows notes for two octaves, with a treble clef and a key signature of one flat (B-flat). The notes are labeled with letters C, D, E, F, G, A, B, and C. The keyboard layout below the staff shows the corresponding keys, with white keys labeled C, D, E, F, G, A, B, and C, and black keys labeled C^b, D^b, E^b, F^b, G^b, A^b, and B^b. A label "Middle" points to the C note on the staff.

Seven-Octave Keyboard

