

WAPPINGERS CENTRAL SCHOOL DISTRICT
Office of the Superintendent of Schools

SPACE & ENROLLMENT COMMITTEE

REPORT TO THE BOARD OF EDUCATION

APRIL 2010

The Wappingers Central School District Board of Education authorized a committee of parents, teachers, administrators, board members and support staff to address the ongoing problem of the district's inconsistent K-12 feeder patterns, inconsistent grade level configurations, inequitable class sizes, and continuous need for overflow adjustments, especially those that have a negative impact on the special education program.

The committee was charged with gathering data, analyzing reorganization options and developing short-term and long-term alternatives to address these issues.

The members of the committee:

James Parla, Chairman	Superintendent of Schools
Lori Jiava	Board of Education
Wendy McNamara	Board of Education
Mary McGeary	Board of Education
Marilyn Schultz	Board of Education
Dr. Charles Hill	Deputy Superintendent
Johanna Hudak	Director, Special Education
Michele Moloney	Business Manager
Dr. Andrew McNally	Principal, Fishkill ES
Steven Shuchat	Principal, Van Wyck JHS
Marco Pochintesta	Principal, John Jay HS
Vince DiGrandi	Principal, Wappingers JHS
Angelina Alvarez-Rooney	Principal, Oak Grove ES
Jose Olavarria	Principal, Gayhead ES
Franco Miele	Principal, Sheafe Road ES
Linda Gilmartin	Teacher, John Jay HS
Donna Basile	Teacher, Van Wyck JHS
Rose Neckles	Teacher, Sheafe Road ES
Lea Lasusa	Teacher, Fishkill ES
Karen Meilleur	Director of Transportation
Kim Catalano	Assistant Supervisor of Transportation
Debbie Kuter	President, Wappingers Council of PTAs
Gregg Ninos	Parent
Maryann Zimmerman	Parent
Laurie McConlogue	Parent

SCOPE OF THE ISSUES

Part 1 – Inconsistent Feeder Patterns

The Wappingers Central School District currently has inconsistent feeder patterns for its schools. These issues have existed for many years. There are issues on both sides of the district. For purposes of this report, they will be referred to as the Ketcham side of the district and the John Jay side of the district, labeled for the high school from which students should graduate.

Current Feeder Patterns:

The Ketcham side of the district includes: Evans Elementary, Myer Corners Elementary, Vassar Road Elementary, Kinry Road Elementary, Sheafe Road Elementary, and Oak Grove Elementary. These schools feed into Wappingers Junior High School, which contains grades 7-8, and then on to Roy C. Ketcham High School for grades 9-12.

The John Jay side of the district includes: Brinckerhoff Elementary, Fishkill Elementary, Fishkill Plains Elementary, and Gayhead Elementary. These schools feed into Van Wyck Junior High School, which is a grade 6-8 school, at either grade 6 or grade 7, and then on to John Jay High School for grades 9-12.

Currently on the Ketcham side of the district:

Some elementaries have a K-6 configuration: Evans, Myers Corners, and Vassar / Kinry. (Vassar and Kinry are sister schools, located within walking distance of each other, with Vassar housing grades K-3 and Kinry housing grades 4-6. They are often considered one unit because of this relationship, and referred to as Vassar / Kinry.) The remaining two elementaries have a K-5 configuration: Sheafe and Oak Grove. Sheafe Road students then move on to Myers Corners Elementary for 6th grade, where there is a separate wing and students from multiple schools enter what is known as a “Sixth Grade Center.” Oak Grove students attend 6th grade at Kinry Road School, where they are part of a “Sixth Grade Center.” All 6th grade students then enter Wappingers Junior High School at 7th grade.

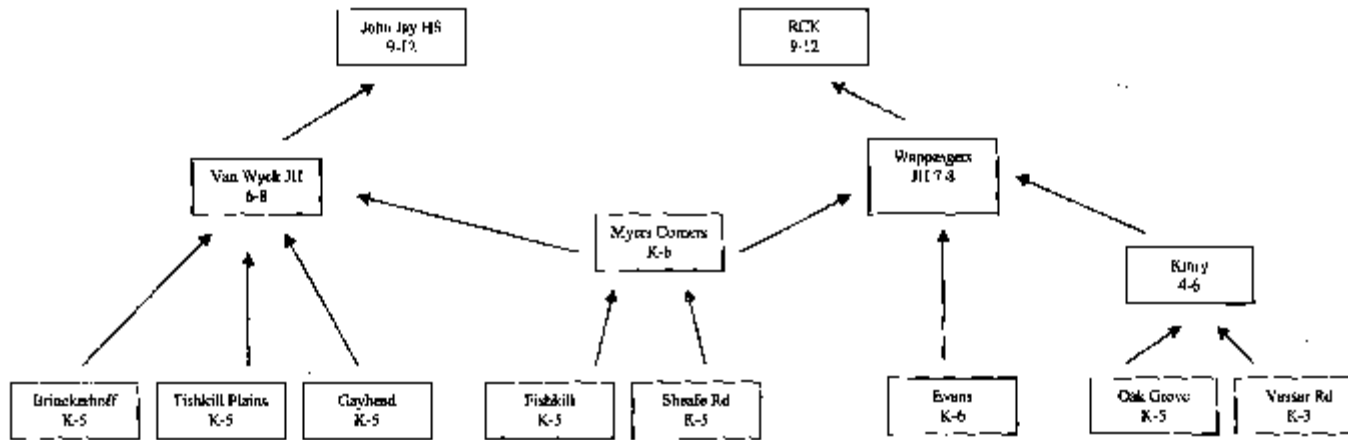
There is one neighborhood that is an anomaly to this “pattern”: Worley Homes, a neighborhood along Old Hopewell Road in the Town of East Fishkill between Route 82 and All Angels Hill Road. Those students currently attend Myers Corners Elementary through grade 5, then attend Van Wyck JH for grades 6-8, then go on to graduate from John Jay HS.

Currently on the John Jay side of the district:

All elementaries have a K-5 configuration. However, at this time only three of the elementaries feed directly into Van Wyck Junior High School for 6th Grade. Those schools are Brinckerhoff, Fishkill Plains, and Gayhead. Due to a lack of space in the 6th grade wing, students from Fishkill attend 6th grade at Myers Corners Elementary, which is on the Ketcham side of the district. They then enter 7th grade at Van Wyck JH one year after their peers.

A flow chart illustrating the current feeder patterns follows.

CURRENT: WCSD “Feeder” Patterns



Issues Caused by Inconsistent Feeder Patterns:

Having inconsistent feeder patterns causes several issues:

- A) Fishkill students have a particularly difficult transition: They attend 6th grade at Myers Corners, where they make friends with schoolmates with whom they may never attend the same school again. Students from the other three John Jay elementaries have also had the advantage of attending 6th grade at Van Wyck, making friends, learning how to navigate their new middle school environment, etc... Fishkill students, despite extra efforts by the Van Wyck administration to help them integrate, may have a difficult time with the transition. Students also attend Myers Corners for only one year, and many parents decide not to become involved in the Myers community for this reason.
- B) Worley Homes students leave the friends they have known since Kindergarten at Myers Corners to enter a new school, making for a difficult transition.
- C) Sheafe Road students attend Myers Corners for only one year, and many parents decide not to become involved in the Myers community for this reason. Some students also have a difficult time with the transition, never feeling part of the school, despite efforts by the administration to create a community atmosphere.
- D) Oak Grove students attend Kinry for only one year, and have trouble with the one year transition despite efforts by the Kinry administration to welcome and involve all parents and students in the Kinry community.

Part 2 – Special Education Class / Services Alignments

Special Education classes at this time have some alignment, but it is not complete. At this time, there are different services offered in each school. Some elementaries offer Inclusion classes for grades 1-5 or 1-6, but not all. To reduce transitions, the Special Education department often “rolls up” a class. For example, an Inclusion class for this year in grade 2 will become a Grade 3 Inclusion class next year. The WCSD Special Education population continues to grow. There has been an increase of 223 students over the last three years.

Issues Caused by Current Special Education Alignment:

At this time, it is not unusual for a classified student to attend two or three different elementary schools by the time they reach 5th grade. These are the students who need the most consistency in their lives and education, yet they are moved often, depending on where there is space in a school that offers the services they need. Some parents choose to “de-classify” their children rather than move them from a school where they and their children are comfortable. The results: these students do not get the services they need; they do not progress through the curriculum as they should; they may tax their general-education teacher who struggles to keep them on track without special education training or the support of special education services.

Purpose of the Committee's Work:

The Space and Enrollment Committee has been assigned the task of researching the above issues and trying to find a way to reduce transitions for all students. Current studies on the issue show that students perform better in school with fewer transitions.

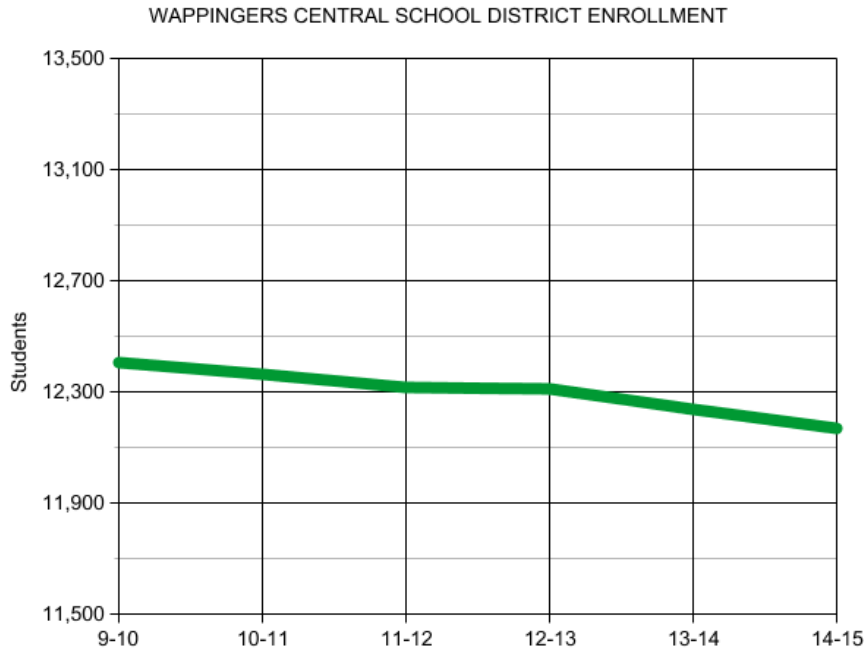
The committee agreed early in its discussions that whenever possible it would be best to consider Vassar / Kinry sister schools. The schools are located so close together that separating neighborhoods would be necessary to change each to K-5 or K-6. Also, the schools are specifically designed for their age groups – small furniture, facilities, etc.. in Vassar, larger facilities in Kinry. There could be significant costs in retrofitting each building. The transition from Vassar to Kinry has been handled well for many years, and families and students are comfortable with it. The committee did consider one alternative that would change the grade configurations of Vassar and Kinry.

The committee also discussed the possibility of inputting the data on each school into the VersaTrans computer system used by the Transportation Department, and allowing the computer, unimpeded by personal connections, to place students in the appropriate elementary school, middle school and high school. The subcommittee assigned to look at this concept realized early in their task that a significant amount of work would have to be done to provide the proper information to the computer, and that it was highly likely large numbers of students would be redistricted in the process. Past redistricting efforts have proved extremely painful to the community and district as a whole. The task assigned to the Space and Enrollment Committee was to reduce transitions, and this road would take the district in the opposite direction: more transitions. It was felt by the committee that further investigation down this path was unnecessary.

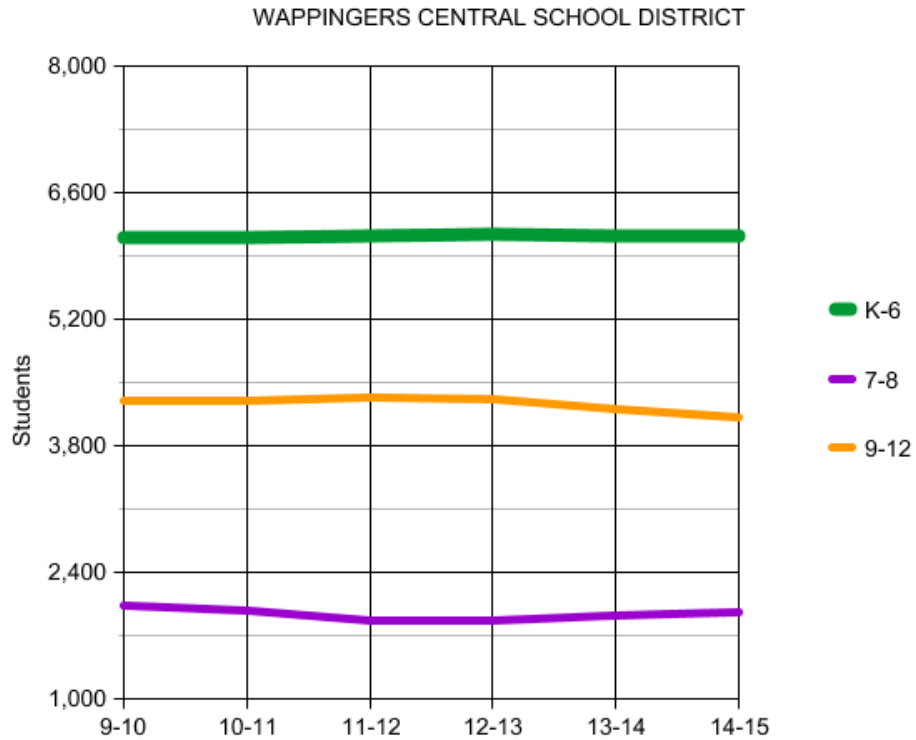
ENROLLMENT ANALYSIS

The Cohort Survival Method has been used to project the district's enrollment over the next five years. This method expresses a quantitative relationship between the numerical size of a grade in a given year in comparison to the size of the next lower grade in the previous year. The number of students in a grade in a given year is divided by the numbers of students in the next lower grade in the previous year. This establishes a quotient to determine if the enrollment goes up or down from year to year. A five year average is used to establish a factor for each grade moving from year to year. This is not as reliable as utilizing ten years of data and a regression analysis. However, it is sufficient.

The following graph shows that enrollment is expected to trend slightly downward over the next five years. It is anticipated that enrollment will decrease by approximately two percent over this period.



The following graph illustrates the projection by grade level groups.



It is important to note that while the Cohort Survival Method of projecting enrollments takes into consideration factors such as transfers to and from non-public schools, normal in and out migration, population variations and resident family characteristics, extraordinary events, such as the conversion of large parcels of vacant land to homes may skew the projections.

It is also important to note that initially the committee’s projections for Kindergarten were lower than those listed in the report from FACTS Presentation Services, Inc. However, a subsequent discussion with the president of FACTS yielded an updated projection based on more accurate data obtained from the New York State Department of Health by FACTS. The difference in the Kindergarten projections are now as follows:

Year	2010-11	2011-12	2012-13	2013-14	2014-15
FACTS projections	767	685	703	674	687
Space & Enroll. Project.	723	723	734	723	723
Difference	-44	+38	+31	+49	+36

Since the committee’s projection numbers are slightly higher than those from FACTS, it is more appropriate to use the committee’s Kindergarten projections since this is a more conservative approach.

CURRENT USE OF SPACE

The current use of rooms in each building is presented. The number of available classrooms is based on a physical count by members of the Space and Enrollment Committee in January 2010. The committee considered as a classroom rooms that are currently used for a classroom plus any smaller spaces that are structurally a full-size classroom but have been converted over time to smaller spaces and could be recaptured with minimum construction.

In the classroom totals that are used in the spreadsheets analyzing different options, rooms for Art and Music are not included in the count. The committee, at the direction of Mr. Parla, did not wish to displace specials with significant space needs such as Art and Music, to make room for classrooms.

The classroom totals represented in the spreadsheets also do not reflect the proposal made to and accepted by the Board of Education in April 2010 during budget discussions for the 2010-2011 school year, which reduces the number of teachers in each elementary building and results in high class sizes. The work of this committee was done to consider if changes could be made assuming average class sizes.

SC = Self-Contained classroom
OT / PT = Occupational Therapy / Physical Therapy
RR = Resource Room
LB = Language Based special education class
AIS = Academic Intervention Services
ESL = English as a Second Language

BRINCKERHOFF ELEMENTARY

FULL-SIZED CLASSROOM	USE
CR 1	K
CR 2	1
CR 3	K
CR 4	1
CR 5	1
CR 6	1
CR 7	2
CR 8	2
CR 9	SC
CR 10	2
CR 12	2
CR 14	TV STATION
CR 15 A/B*	SC / RR
CR 16	MUSIC
CR 17 A/B	SP ED OFFICE/PULL-OUT
CR 18	ART
CR 19	5
CR 20	SC
CR 21	5
CR 22	5
CR 23	5
CR 24 A/B*	RR / OT & PT
CR 31	3
CR 32	3
CR 33	3
CR 34	4
CR 35	4
CR 36	4
CR 37	4
CR 38	4

Total full-sized available classrooms—26

6 Pull-out options—#14 (TV Station), #17 B—2 ¼ sized spaces, recapture 1/3 of library for OT/PT/ Reading, AIS room, reading room, conference room

* Rooms that could be recaptured and put back to use as a classroom

EVANS ELEMENTARY

FULL-SIZED CLASSROOM

USE

103	K
104	SC 3-4 / SPEECH
105	1
106	1
107	AIS / READING
108	SC K-1
119	5
120	2
121	PSYCH/SOCIAL WORKER/PULL OUT
122	2
123	1
124	MUSIC
130	3
132	2
134	3
205	4
206	COMPUTER
207	6
208	6
209	5
210	4

Total full-sized available classrooms: 18

FISHKILL ELEMENTARY SCHOOL

FULL-SIZED CLASSROOM	USE
100	4
101	4
102	3
103	3
104	4
105	3
106	3
107	ART
112	K
114	K
120	SC
121	2
122	2
123	1
124	1
125	1
126	1
MOD 1	2
MOD 2	2
200	5
201	5
300	5
301	4
B1	MUSIC

Total full-sized available classrooms: 22

FISHKILL PLAINS ELEMENTARY

FULL-SIZED CLASSROOM	USE
CR1	5
CR2	4
CR3	4
CR4	5
CR5	4
CR6	3
CR8	3
CR9	5
CR10	3
CR11	3
CR12	4
CR13	3
CR18	5
CR19	4
CR20	K
CR21	K
CR22	2
CR23	OPEN
CR24	1
CR25	2
CR26	2
CR27	1
CR28	1
CR29	2
CR30	2
CR32	1
1/3 Library*	LIBRARY

Total full-sized available classrooms: 27

* Rooms that could be recaptured and put back to use as a classroom

GAYHEAD ELEMENTARY

FULL-SIZED CLASSROOM

USE

LOWER LEVEL

CR1	K
CR2	K
CR3	K
CR4	2
CR5	2
CR6	2
CR7	1
CR8	1
CR9	1
CR10	ESL
2A/B	ESL

MAIN LEVEL

CR11	3
CR12	ART
CR13	SC COMM
CR14	4
CR15	5
CR16	4
CR17	5
CR18	4
CR19	5
CR20	3
CR21	3
CR22	3
CR22D	COMPUTER (NO WINDOWS)
CR23	3
CR24	3
CR25	3
CR26	3
CR27	SC LB-3
CR28	1
CR29	1
CR30 A/B*	SP ED COORDINATOR
CR31	1
CR32	2
CR33	2
CR34	1

GAYHEAD (CONTINUED)

FULL-SIZED CLASSROOM	USE
CR35	2
CR35A	MUSIC
CR36	ART
CR37	MUSIC
CR38	4
CR39	4
CR40	4
CR41	SC LB 4
CR42	4
MODULARS	
COTTAGE 1	5
COTTAGE 2	5
COTTAGE 3	5
COTTAGE 4	5

* Rooms that could be recaptured and put back to use as a classroom
PRIMARY LIBRARY (ONLY ONE LIBRARIAN—TWO LIBRARIES)
SPECIAL ED COORDINATOR'S OFFICE (RELOCATE TO AIS SUITE)

Total Full-sized available classrooms: 44

KINRY ROAD ELEMENTARY

FULL-SIZED CLASSROOM

USE

101	ART
102	MUSIC
103	6
104	6
105	6
106	6
107	SC
108	6
109	6
110	6
111	6
201	4
202	4
203	4
204	4
205	4
206	5
207	5
208	5
209	5
210	5
211	Computer

Total full-sized available classrooms: 19

MYERS CORNERS ELEMENTARY

FULL-SIZED CLASSROOM	USE
101	3
102	K
103	K
104	3
105	2
106	2
107	2
108	1
109	1
110	1
111	1
112	1
113	AIS/READING
114	MUSIC
115	6
116	6
117	6
118	6
119	6
120	6
121	6
122	6
123	ESL
125	MUSIC
126	2
201	3
202	SC 5/6
203	3
204	3
205	4
206	4
207	4
208	COMPUTER LAB
209	4
214	ART
215	ART
216	READING/OT/PT
217	5
218	5
219	5
220	5
221	6
222	6 Total full-sized available classrooms: 36

OAK GROVE ELEMENTARY SCHOOL

FULL-SIZED CLASSROOM	USE
CR1	K
CR2	SC
CR3	SC
CR4	K
CR5	1
CR6	1
CR7	2
CR8	1
CR9	MUSIC
CR10	2
CR12	2
CR 14 A/B	AIS/READING
CR16	5
CR18	3
CR19	ART
CR20	5
CR21	3
CR22	SC LB
CR23	3
CR24	4
CR25	4
CR26	2
CR27 A/B*	OT / PT
CR28	4
CR29	COMPUTER
CR30	OPEN

Total full-sized available classrooms: 22

* Rooms that could be recaptured and put back to use as a classroom

SHEAFE ROAD ELEMENTARY SCHOOL

FULL-SIZED CLASSROOM	USE
CR1	K
CR2	K
CR3	1
CR4	1
CR5	1
CR6	1
CR7	1
CR8	2
CR9	2
CR10	2
CR11 *	AIS/MEETING
CR12	2
CR13 AB	AIS
CR15	COMPUTER
CR16	ART
CR17	MUSIC
CR18	SC
CR19	5
CR20	5
CR21 ABC	PULL OUT/ESL
CR22	5
CR23	4
CR24	5
CR25	SC
CR26	4
CR27	3
CR28	4
CR29	3
CR30	3
CR32	3

Total full-sized available classrooms: 25

* Rooms that could be recaptured and put back to use as a classroom

VASSAR ROAD ELEMENTARY SCHOOL

FULL-SIZED CLASSROOM	USE
CR1	K
CR2	SC
CR3	1
CR4	MUSIC
CR5	K
CR6	1
CR7	1
CR8	1
CR9	2
CR11	1
CR12	2
CR13	ART
CR14A/B	OT/PT/AIS
CR15	2
CR16	2
CR17	3
CR18	3
CR19 *	OPEN
CR20	3
CR21	3

Total full-sized available classrooms: 17

* Rooms that could be recaptured and put back to use as a classroom

ANALYSIS OF THE STATUS QUO:

Maintaining the status quo would not be possible without making modifications to accommodate our students in some of our elementary schools. For the 2010-2011 school year three elementary schools would lack adequate classroom space for its total number of class sections. Evans would lack one classroom, Fishkill would lack one classroom and Gayhead would lack one classroom. This remains the case through the 2014-2015 school year. In fact, Vassar joins the list in the 2011-2012 school year, lacking one classroom.

The status quo does not address three additional, important issues. First, the disjointed feeder patterns remain in place requiring our students to attend three schools prior to attending high school. Second, we would need to continue to resort to our “overflow” process to accommodate our students. Moving students out of one school to another for reason of lack of space may be detrimental to students. Students in such a position need to acclimate to a new environment, including new teachers and new students numerous times before they reach high school. This is especially problematic for special education students. Third, the status quo also does not address the issue of inequitable class sizes throughout the district.

There are no real advantages in keeping the status quo since the Board of Education’s goals, i.e. consistent grade level patterns and transitions are not addressed. However, one could argue that not making any changes would obviate any controversies. This is a “weak” advantage, at best. Some may argue that students attending Myers Corners for sixth grade have an additional year to become familiar with classmates prior to entering junior high school. However, this would not be the case for the students attending Myers from Fishkill. These students lose a year getting to know the classmates with whom they will eventually be attending high school. They enter Van Wyck JH one year after their classmates, which may be problematic for some students regarding adjustments to new friends and activities.

FINANCIAL ANALYSIS

There would be minimal change in our costs if the status quo remained. It is possible that we would need to add a modular unit at each of the three elementary schools mentioned above. The cost of this would be approximately \$1.5 million. It is more likely that additional space would be recaptured such as reclaiming a computer lab as a classroom. This then, would be considered another disadvantage.

The following spreadsheet (Pages 1A – 6A) shows the projected enrollments per school per grade, the number of sections per grade, and the number of available classrooms at each school as determined by a physical count by the Space and Enrollment Committee in January 2010.

Space and Enrollment Chart A - Status Quo Rooms

09-10 STATUS QUO

	K	1	2	3	4	5	6	SC	Inclusion Teachers	TOTAL	Available Rooms	Difference	5/6/2010 Notes
BRINKERHOFF	82	90	89	77	105	103	0	37		583			
#Teachers	2	4	4	3	5	4	0	3	1	26			
#Rooms	2	4	4	3	5	4	0	3		25	26	1	
Ave. Class Size	20.5	22.5	22.25	25.67	21	25.75	0	12.33					
EVANS	49	49	61	46	43	53	38	32		371			
#Teachers	1	3	3	2	2	2	2	3		18			
#Rooms	1	3	3	2	2	2	2	3		18	18	0	
Ave. Class Size	24.5	16.33	20.33	23	21.5	26.5	19	10.67					
FISHKILL	71	100	82	85	79	80	0	11		508			
#Teachers	2	4	4	4	4	3	0	1	2	24			
#Rooms	2	4	4	4	4	3	0	1		22	22	0	
Ave. Class Size	17.75	25	20.5	21.25	19.75	26.67	0	11					
FISHKILL PLAINS	84	90	115	106	116	71	0	12		594			
#Teachers	2	4	5	5	5	3	0	1	2	27			
#Rooms	2	4	5	5	5	3	0	1		25	27	2	
Ave. Class Size	21	22.5	23	21.2	23.2	23.67	0	12					
GAYHEAD	144	174	154	200	171	177	0	27		1047			
#Teachers	3	7	6	8	7	7	0	3	6	47			
#Rooms	3	7	6	8	7	7	0	3		41	42	1	
Ave. Class Size	24	24.86	25.67	25	24.43	25.29	0	9					
KINRY ROAD	0	0	0	0	116	120	179	12		427			
#Teachers	0	0	0	0	5	5	8	1	1	20			
#Rooms	0	0	0	0	5	5	8	1		19	19	0	
Ave. Class Size	0	0	0	0	23.2	24	22.38	12					
MYERS CORNERS	59	95	99	106	90	108	260	12		829			
#Teachers	1.5	5	4	5	4	4	11	1	8	43.5			
#Rooms	2	5	4	5	4	4	11	1		36	37	1	
Ave. Class Size	19.67	19	24.75	21.2	22.5	27	23.64	12					
OAK GROVE	56	64	52	54	62	77	0	36		401			
#Teachers	1.5	3	3	3	3	3	0	3		19.5			
#Rooms	2	3	3	3	3	3	0	3		20	22	2	
Ave. Class Size	18.67	21.33	17.33	18	20.67	25.67	0	12					
SHEAFE ROAD	70	97	92	88	75	80	0	23		525			
#Teachers	2	5	4	4	3	4	0	2	5	29			
#Rooms	2	5	4	4	3	4	0	2		24	25	1	
Ave. Class Size	17.5	19.4	23	22	25	20	0	11.5					
VASSAR ROAD	98	91	95	99	0	0	0	7		390			
#Teachers	2	5	4	4	0	0	0	1	1	17			
#Rooms	2	5	4	4	0	0	0	1		16	17	1	
Ave. Class Size	24.5	18.2	23.75	24.75	0	0	0	7					
TOTALS	713	850	839	861	857	869	477	209		271 Teachers			

Space and Enrollment Chart A - Status Quo Rooms

10-11 STATUS QUO

	K	1	2	3	4	5	6	SC	Inclusion Teachers	TOTAL	Available Rooms	Difference	Notes
BRINKERHOFF	83	96	88	90	79	108	0	38		582			
#Teachers	2	4	4	4	4	5	0	3	1	27			
#Rooms	2	4	4	4	4	5	0	3		26	26	0	
Ave. Class Size	20.75	24	22	22.5	19.75	21.6	0	12.67					
EVANS	50	57	48	62	47	44	54	32		394			
#Teachers	1	3	2	3	2	2	2	3		18			
#Rooms	1	3	2	3	2	2	2	3		18	18	0	6th was 3
Ave. Class Size	25	19	24	20.67	23.5	22	27	10.67					
FISHKILL	72	83	98	83	87	81	0	12		516			
#Teachers	2	4	4	4	4	3	0	1	2	24			
#Rooms	2	4	4	4	4	3	0	1		22	22	0	5th was 4
Ave. Class Size	18	20.75	24.5	20.75	21.75	27	0	12					
FISHKILL PLAINS	85	98	88	116	109	120	0	12		628			
#Teachers	2	4	4	5	5	5	0	1	2	28			
#Rooms	2	4	4	5	5	5	0	1		26	27	1	
Ave. Class Size	21.25	24.5	22	23.2	21.8	24	0	12					
GAYHEAD	146	169	170	156	206	176	0	27		1050			
#Teachers	3	7	7	7	8	7	0	3	6	48			K was 4
#Rooms	3	7	7	7	8	7	0	3		42	42	0	
Ave. Class Size	24.33	24.14	24.29	22.29	25.75	25.14	0	9					
KINRY ROAD	0	0	0	0	102	120	200	12		434			
#Teachers	0	0	0	0	5	5	8	1	1	20			
#Rooms	0	0	0	0	5	5	8	1		19	19	0	
Ave. Class Size	0	0	0	0	20.4	24	25	12					
MYERS CORNERS	60	69	93	100	109	93	274	12		810			
#Teachers	1.5	3	4	5	5	4	11	1	8	42.5			
#Rooms	2	3	4	5	5	4	11	1		35	37	2	
Ave. Class Size	20	23	23.25	20	21.8	23.25	24.91	12					
OAK GROVE	57	66	63	53	56	64	0	36		395			
#Teachers	1.5	3	3	3	3	3	0	3		19.5			
#Rooms	2	3	3	3	3	3	0	3		20	22	2	
Ave. Class Size	19	22	21	17.67	18.67	21.33	0	12					
SHEAFE ROAD	71	82	95	93	91	77	0	24		533			
#Teachers	2	4	4	4	4	4	0	2	5	29			
#Rooms	2	4	4	4	4	4	0	2		24	25	1	
Ave. Class Size	17.75	20.5	23.75	23.25	22.75	19.25	0	12					
VASSAR ROAD	99	115	89	96	0	0	0	8		407			
#Teachers	2.5	5	4	4	0	0	0	1	1	17.5			
#Rooms	3	5	4	4	0	0	0	1		17	17	0	
Ave. Class Size	19.8	23	22.25	24	0	0	0	8					
TOTALS	723	835	832	849	886	883	528	213		273.5 Teachers			

Space and Enrollment Chart A - Status Quo Rooms

11-12 STATUS QUO

	K	1	2	3	4	5	6	SC	Inclusion Teachers	TOTAL	Available Rooms	Difference	Notes
BRINKERHOFF	83	97	94	89	93	82	0	38		576			
#Teachers	2	4	4	4	4	4	0	3	1	26			
#Rooms	2	4	4	4	4	4	0	3		25	26	1	
Ave. Class Size	20.75	24.25	23.5	22.25	23.25	20.5	0	12.67					
EVANS	50	59	56	48	63	49	45	32		402			K was 2
#Teachers	1	3	3	2	3	2	2	3		19			
#Rooms	1	3	3	2	3	2	2	3		19	18	-1	
Ave. Class Size	25	19.67	18.67	24	21	24.5	22.5	10.67					
FISHKILL	72	84	81	99	85	90	0	12		523			
#Teachers	2	4	4	4	4	4	0	1	2	25			
#Rooms	2	4	4	4	4	4	0	1		23	22	-1	
Ave. Class Size	18	21	20.25	24.75	21.25	22.5	0	12					
FISHKILL PLAINS	85	100	96	89	120	112	0	12		614			
#Teachers	2	4	4	4	5	5	0	1	2	27			
#Rooms	2	4	4	4	5	5	0	1		25	27	2	
Ave. Class Size	21.25	25	24	22.25	24	22.4	0	12					
GAYHEAD	146	171	165	172	160	212	0	27		1053			
#Teachers	3	7	7	7	7	9	0	3	6	49			K was 4
#Rooms	3	7	7	7	7	9	0	3		43	42	-1	
Ave. Class Size	24.33	24.43	23.57	24.57	22.86	23.56	0	9					
KINRY ROAD	0	0	0	0	99	105	187	12		403			
#Teachers	0	0	0	0	5	5	8	1	1	20			
#Rooms	0	0	0	0	5	5	8	1		19	19	0	
Ave. Class Size	0	0	0	0	19.8	21	23.38	12					
MYERS CORNERS	60	70	68	94	103	112	255	12		774			
#Teachers	1.5	3	3	4	5	5	11	1	8	41.5			
#Rooms	2	3	3	4	5	5	11	1		34	37	3	
Ave. Class Size	20	23.33	22.67	23.5	20.6	22.4	23.18	12					
OAK GROVE	57	67	64	63	54	57	0	36		398			
#Teachers	1.5	3	3	3	3	3	0	3		19.5			
#Rooms	2	3	3	3	3	3	0	3		20	22	2	
Ave. Class Size	19	22.33	21.33	21	18	19	0	12					
SHEAFE ROAD	71	83	80	96	96	93	0	24		543			
#Teachers	1.5	4	4	4	4	4	0	2	5	28.5			
#Rooms	2	4	4	4	4	4	0	2		24	25	1	
Ave. Class Size	23.67	20.75	20	24	24	23.25	0	12					
VASSAR ROAD	99	116	112	90	0	0	0	7		424			
#Teachers	2	5	5	4	0	0	0	1	1	18			
#Rooms	2	5	5	4	0	0	0	1		17	17	0	
Ave. Class Size	24.75	23.2	22.4	22.5	0	0	0	7					
TOTALS	723	847	816	840	873	912	487	212		273.5 Teachers			

Space and Enrollment Chart A - Status Quo Rooms

12-13 STATUS QUO

	K	1	2	3	4	5	6	SC	Inclusion Teachers	TOTAL	Available Rooms	Difference	Notes
BRINKERHOFF	83	97	95	95	91	95	0	40		596			
#Teachers	2	4	4	4	4	4	0	3	1	26			
#Rooms	2	4	4	4	4	4	0	3		25	26	1	
Ave. Class Size	20.75	24.25	23.75	23.75	22.75	23.75	0	13.33					
EVANS	50	59	57	57	50	65	50	32		420			
#Teachers	1	3	3	3	2	3	2	3		20			
#Rooms	1	3	3	3	2	3	2	3		20	18	-2	K was 2
Ave. Class Size	25	19.67	19	19	25	21.67	25	10.67					
FISHKILL	72	84	83	82	102	88	0	12		523			
#Teachers	1.5	4	4	4	4	4	0	1	2	24.5			4th was 5
#Rooms	2	4	4	4	4	4	0	1		23	22	-1	
Ave. Class Size	24	21	20.75	20.5	25.5	22	0	12					
FISHKILL PLAINS	85	100	97	97	91	123	0	12		605			
#Teachers	2	4	4	4	4	5	0	1	2	26			
#Rooms	2	4	4	4	4	5	0	1		24	27	3	
Ave. Class Size	21.25	25	24.25	24.25	22.75	24.6	0	12					
GAYHEAD	146	171	167	167	177	165	0	27		1020			
#Teachers	3	7	7	7	7	7	0	3	6	47			
#Rooms	3	7	7	7	7	7	0	3		41	42	1	
Ave. Class Size	24.33	24.43	23.86	23.86	25.29	23.57	0	9					
KINRY ROAD	0	0	0	0	93	102	181	12		388			
#Teachers	0	0	0	0	4	5	8	1	1	19			
#Rooms	0	0	0	0	4	5	8	1		18	19	1	
Ave. Class Size	0	0	0	0	23.25	20.4	22.63	12					
MYERS CORNERS	60	70	69	68	97	106	297	12		779			#s seem low
#Teachers	1.5	3	3	3	4	5	12	1	8	40.5			
#Rooms	2	3	3	3	4	5	12	1		33	37	4	
Ave. Class Size	20	23.33	23	22.67	24.25	21.2	24.75	12					
OAK GROVE	57	67	65	65	65	56	0	36		411			
#Teachers	1.5	3	3	3	3	3	0	3		19.5			
#Rooms	2	3	3	3	3	3	0	3		20	22	2	
Ave. Class Size	19	22.33	21.67	21.67	21.67	18.67	0	12					
SHEAFE ROAD	71	83	81	81	99	99	0	24		538			
#Teachers	1.5	4	4	4	4	4	0	2	5	28.5			
#Rooms	2	4	4	4	4	4	0	2		24	25	1	
Ave. Class Size	23.67	20.75	20.25	20.25	24.75	24.75	0	12					
VASSAR ROAD	99	116	114	114	0	0	0	7		450			
#Teachers	2	5	5	5	0	0	0	1	1	19			K was 2.5
#Rooms	2	5	5	5	0	0	0	1		18	17	-1	K was 3
Ave. Class Size	24.75	23.2	22.8	22.8	0	0	0	7					
TOTALS	723	847	828	826	865	899	528	214		270 Teachers			

Space and Enrollment Chart A - Status Quo Rooms

13-14 STATUS QUO

	K	1	2	3	4	5	6	SC	Inclusion Teachers	TOTAL	Available Rooms	Difference	Notes
BRINKERHOFF	83	97	95	96	98	94	0	41		604			
#Teachers	2	4	4	4	4	4	0	3	1	26			
#Rooms	2	4	4	4	4	4	0	3		25	26	1	
Ave. Class Size	20.75	24.25	23.75	24	24.5	23.5	0	13.67					
EVANS	50	59	57	58	58	51	67	32		432			
#Teachers	1	3	3	3	3	2	3	3		21			
#Rooms	1	3	3	3	3	2	3	3		21	18	-3	K was 2
Ave. Class Size	25	19.67	19	19.33	19.33	25.5	22.33	10.67					
FISHKILL	72	84	83	83	85	105	0	12		524			
#Teachers	1.5	4	4	4	4	4	0	1	2	24.5			
#Rooms	2	4	4	4	4	4	0	1		23	22	-1	5th was 5
Ave. Class Size	24	21	20.75	20.75	21.25	26.25	0	12					
FISHKILL PLAINS	85	100	97	98	100	94	0	12		586			
#Teachers	2	4	4	4	4	4	0	1	2	25			
#Rooms	2	4	4	4	4	4	0	1		23	27	4	
Ave. Class Size	21.25	25	24.25	24.5	25	23.5	0	12					
GAYHEAD	146	171	167	169	172	182	0	27		1034			
#Teachers	3	7	7	7	7	8	0	3	6	48			
#Rooms	3	7	7	7	7	8	0	3		42	42	0	
Ave. Class Size	24.33	24.43	23.86	24.14	24.57	22.75	0	9					
KINRY ROAD	0	0	0	0	116	96	180	12		404			
#Teachers	0	0	0	0	5	5	8	1	1	20			
#Rooms	0	0	0	0	5	5	8	1		19	19	0	
Ave. Class Size	0	0	0	0	23.2	19.2	22.5	12					
MYERS CORNERS	60	70	69	70	70	100	295	12		746			# seem low
#Teachers	1.5	3	3	3	3	4	12	1	8	38.5			
#Rooms	2	3	3	3	3	4	12	1		31	37	6	
Ave. Class Size	20	23.33	23	23.33	23.33	25	24.58	12					
OAK GROVE	57	67	65	66	67	67	0	36		425			
#Teachers	1.5	3	3	3	3	3	0	3		19.5			
#Rooms	2	3	3	3	3	3	0	3		20	22	2	
Ave. Class Size	19	22.33	21.67	22	22.33	22.33	0	12					
SHEAFE ROAD	71	83	81	82	83	102	0	24		526			
#Teachers	1.5	4	4	4	4	5	0	2	5	29.5			
#Rooms	2	4	4	4	4	5	0	2		25	25	0	
Ave. Class Size	23.67	20.75	20.25	20.5	20.75	20.4	0	12					
VASSAR ROAD	99	116	114	115	0	0	0	7		451			
#Teachers	2	5	5	5	0	0	0	1	1	19			K was 2.5
#Rooms	2	5	5	5	0	0	0	1		18	17	-1	K was 3
Ave. Class Size	24.75	23.2	22.8	23	0	0	0	7					
TOTALS	723	847	828	837	849	891	542	215		271 Teachers			

Space and Enrollment Chart A - Status Quo Rooms

14-15 STATUS QUO

	K	1	2	3	4	5	6	SC	Inclusion Teachers	TOTAL	Available Rooms	Difference	Notes
BRINKERHOFF	83	97	95	96	99	101	0	41		612			
#Teachers	2	4	4	4	4	4	0	3	1	26			
#Rooms	2	4	4	4	4	4	0	3		25	26	1	
Ave. Class Size	20.75	24.25	23.75	24	24.75	25.25	0	13.67					
EVANS	50	59	57	58	60	60	52	32		428			
#Teachers	1	3	3	3	3	3	2	3		21			K was 1.5
#Rooms	1	3	3	3	3	3	2	3		21	18	-3	K was 2
Ave. Class Size	25	19.67	19	19.33	20	20	26	10.67					
FISHKILL	72	84	83	83	86	87	0	12		507			
#Teachers	1.5	4	4	4	4	4	0	1	2	24.5			
#Rooms	2	4	4	4	4	4	0	1		23	22	-1	
Ave. Class Size	24	21	20.75	20.75	21.5	21.75	0	12					
FISHKILL PLAINS	85	100	97	98	101	103	0	12		596			
#Teachers	2	4	4	4	4	4	0	1	2	25			4th was 5
#Rooms	2	4	4	4	4	4	0	1		23	27	4	5th was 5
Ave. Class Size	21.25	25	24.25	24.5	25.25	25.75	0	12					
GAYHEAD	146	171	167	169	174	177	0	27		1031			
#Teachers	3	7	7	7	7	7	0	3	6	47			
#Rooms	3	7	7	7	7	7	0	3		41	42	1	
Ave. Class Size	24.33	24.43	23.86	24.14	24.86	25.29	0	9					
KINRY ROAD	0	0	0	0	118	120	192	12		442			
#Teachers	0	0	0	0	5	5	8	1	1	20			
#Rooms	0	0	0	0	5	5	8	1		19	19	0	
Ave. Class Size	0	0	0	0	23.6	24	24	12					
MYERS CORNERS	60	70	69	70	72	73	308	12		734			#s seem low
#Teachers	1.5	3	3	3	3	3	13	1	8	38.5			
#Rooms	2	3	3	3	3	3	13	1		31	37	6	
Ave. Class Size	20	23.33	23	23.33	24	24.33	23.69	12					
OAK GROVE	57	67	65	66	68	69	0	36		428			
#Teachers	1.5	3	3	3	3	3	0	3		19.5			
#Rooms	2	3	3	3	3	3	0	3		20	22	2	
Ave. Class Size	19	22.33	21.67	22	22.67	23	0	12					
SHEAFE ROAD	71	83	81	82	85	86	0	24		512			
#Teachers	1.5	4	4	4	4	4	0	2	5	28.5			
#Rooms	2	4	4	4	4	4	0	2		24	25	1	
Ave. Class Size	23.67	20.75	20.25	20.5	21.25	21.5	0	12					
VASSAR ROAD	99	116	114	115	0	0	0	7		451			
#Teachers	2	5	5	5	0	0	0	1	1	19			K was 2.5
#Rooms	2	5	5	5	0	0	0	1		18	17	-1	K was 3
Ave. Class Size	24.75	23.2	22.8	23	0	0	0	7					
TOTALS	723	847	828	837	863	876	552	215		269 Teachers			

ANALYSIS OF ALTERNATIVE #1 – MAKE ALL RCK ELEMENTARIES K-6

Alternative # 1 is entitled: Make all elementary schools that feed into Roy C. Ketcham High School grades K-6. It is important to note that at this time, most of the RCK elementaries are K-6: Myers, Evans, and Vassar / Kinry. This alternative would bring Sheafe Road and Oak Grove in line with the others. The details to accomplish this are:

1. Brinckerhoff will remain a K-5 school.
2. Evans will remain a K-6 school.
3. Fishkill will no longer go to Myers Corners for 6th grade center. Fishkill will remain K-5 and go directly to Van Wyck JH for 6th grade.
4. Fishkill Plains will stay a K-5 school. Worley Homes will move here from Myers, giving this neighborhood a consistent feeder pattern to John Jay HS.
5. Gayhead will stay a K-5 school.
6. Kinry Road will stay 4-6, but will no longer have Oak Grove attending just for 6th grade.
7. Myers Corners will stay a K-6 school. It will no longer be a 6th grade center for Sheafe Road and Fishkill, who in the past have attended for one year only – 6th grade.
8. Oak Grove will become a K-6 school, keeping its 5th grade through 6th grade.
9. Sheafe Road will become a K-6 school, keeping its 5th grade through 6th grade
10. Vassar Road will stay a K-3 school, with its students attending 4-6 at its sister school, Kinry.

Making room available for two schools to house an additional grade necessitates movement of Special Education Services, which is a benefit that allows for the alignment of services in several schools. The following Special Education class moves will be made over two years:

1. Brinckerhoff: English as a Second Language (ESL) will move here from Gayhead.
2. Evans: Communications 1-2-3 moves to Myers in 2011-12.
3. Fishkill: Inclusion (ICT) 2 moves to Sheafe Road, aligning ICT K-6 at Sheafe Road.
4. Fishkill Plains. Language Based 5 moves to Gayhead. ICT 1 moves here.
5. Gayhead: Language Based K-5 will be aligned here. ESL will move to Brinckerhoff, freeing 2 classrooms. Communications 4-5 moves to Myers in 2011-12.
6. Kinry Road: Adds Self-Contained (SC) 4-5 and keeps Self Contained 5-6.
7. Myers Corners: In 2011-12, accepts Communications K-1 from Vassar, Communications 1-2-3 from Evans, and Communications 4-5 from Gayhead.
8. Oak Grove: Language Based 1-2 moves to Gayhead, Self Contained 4-5 moves to Kinry, and 6th grade Inclusion will be created here. In 2011-12 Self Contained 1 moves to Vassar.
9. Sheafe Road: Self-Contained 2-3 moves to Vassar, Self-Contained 6 moves to Myers, ICT 6 created here.
10. Vassar Road : In 2011-12, Self- Contained K-1 moves here, Self Contained 2-3 moves here, Communications K-1 moves to Myers.

The attached spreadsheet (Pages 1B – 6B) shows the projected enrollments per school per grade, the number of sections per grade, and the number of available classrooms at each school as determined by a physical count by the Space and Enrollment Committee in January 2010. It also shows the number of teachers needed at each school and in total for Elementary level education. Highlighted numbers reflect changes called for in the plan. Boxed numbers indicate where there is a room shortage, and the administration may wish to look at this area to make the sections fit.

If the Alternative # 1 changes to class configuration and special education alignment are made, and enrollment projections are correct:

1. Brinckerhoff will have one spare room through 2014-15, and average to large class sizes.
2. Evans will have enough rooms through 2014-15, with the potential of some large class sizes in the higher grades. Available classrooms at Evans are the issue: Evans has only 18 available rooms, and with grade enrollments between 55 and 65. The difference between two sections and three sections means the difference between 30 in a class vs. 20 in a class.
3. Fishkill will have enough rooms through 2014-15, keeping their modular for 22 rooms, with low class sizes.
4. Fishkill Plains, which has one spare room now, will continue to have increasing numbers of spare rooms starting in 2010-11, up to four spare rooms. Class sizes will be average.
5. Gayhead will have two extra rooms by keeping their modulars and counting the two gained ESL classrooms to give them a room count of 44. Class sizes will be average – 22-25.
6. Kinry Road will have two to three extra rooms through 2014-15, with low class sizes.
7. Myers Corners will have increasing numbers of free rooms, starting with seven in 2010-11 and reaching 12 rooms by 2014-15, with average class sizes.
8. Oak Grove will have one to two spare rooms through 2014-15, with low class sizes.
9. Sheafe Road will have just enough room through 2014-15. Class sizes will be low.
10. Vassar Road will have the right number of rooms, with the exception of 2012-13 where it may be short one room. Sections may need to be collapsed in 2nd grade, making high class sizes in that grade, or a room may need to be recaptured. Class sizes will be average overall.
11. Van Wyck can sustain having the additional students from Fishkill over the next five years – the chart below shows class sizes with 16 – 19 sections of 6th grade through 2014-15. In 2010-11, a low 6th grade enrollment allows Fishkill students to attend Van Wyck with no changes to the current 6th grade plan. In 2011-12, this would be accomplished by recapturing certain office spaces near the 6th grade wing to make room for a full team of students in those three rooms. There is enough room in the current lunch period configuration for the increase.

Van Wyck Class Sizes with Fishkill:

Year	2010-11	2011-12	2012-13	2013-14	2014-15
6th grade enrollment	437	485	502	475	472
16 sections-class sizes	27	30 - 31	30-31	29-30	29-30
17 sections-class sizes	N/A	28-29	29-30	27-28	27-28
18 sections- class sizes	N/A	26-27	27-28	26-27	26-27
19 sections – class sizes	N/A	25-26	26-27	25-26	24-25

BENEFITS OF ALTERNATIVE #1

- Making the elementaries on the Ketcham side of the district K-6 reduces transitions for students at Fishkill, Oak Grove and Sheafe Road, which was one major goal of the Space and Enrollment Committee.
- The space freed at Myers Corners and Kinry Road allows for alignment of Special Education services. Alternative # 1 would create a continuum of services in our elementary buildings, thus reducing the number of transitions special education students have to make.
- All RCK elementaries will have the same grade level configuration, which will be K-6.
- Students on the Ketcham side of district will go directly from their home elementary to their middle school, as students on the John Jay side do now. This will bring WCSD one step closer to its goal of following the “Middle School Model”.
- The moves made within Alternative # 1 improve transportation routes, which result in less time on the bus for students and significant cost savings for the district.
- This alternative has the least amount of boundary shifts of all the alternatives explored and presented in this report by the committee.
- Alternative # 1 eliminates the “Only One Year” issues that reduce parent involvement at both Kinry Road and Myers Corners.
- The Worley Homes development will have a consistent John Jay feeder pattern from start to finish by moving to Fishkill Plains. They currently attend Myers Corners through 5th grade then go on to Van Wyck JH and graduate from John Jay. This development was once part of the Fishkill Plains catchment area until it was moved to Myers due to lack of space at Fishkill Plains.
- This alternative allows for some neighborhoods to be moved to schools that are geographically closer, which would provide breathing room at some schools, reduce time on the bus for students, and allow for further transportation savings. Those additional neighborhood moves have been presented separately at the end of this section, as they are independent of implementing Alternative #1.
- Van Wyck can sustain having the additional students from Fishkill over the next 5 years.

DRAWBACKS OF ALTERNATIVE #1

- Due to the realignment of classes some special education students will initially need to change buildings. While some students and parents will not be happy having to change schools this is no different from what happens regularly. Every year the Special Education staff finds it necessary to have some classified students move to another building. Classified students are often required to change schools to attend the special education program for which they have been recommended. The alignment of classes will be explained to parents with emphasis on how it should reduce the need to change schools in the future. However, no promises can be made.
- Some special education teachers may have concerns about changing buildings due to the realignment of programs.

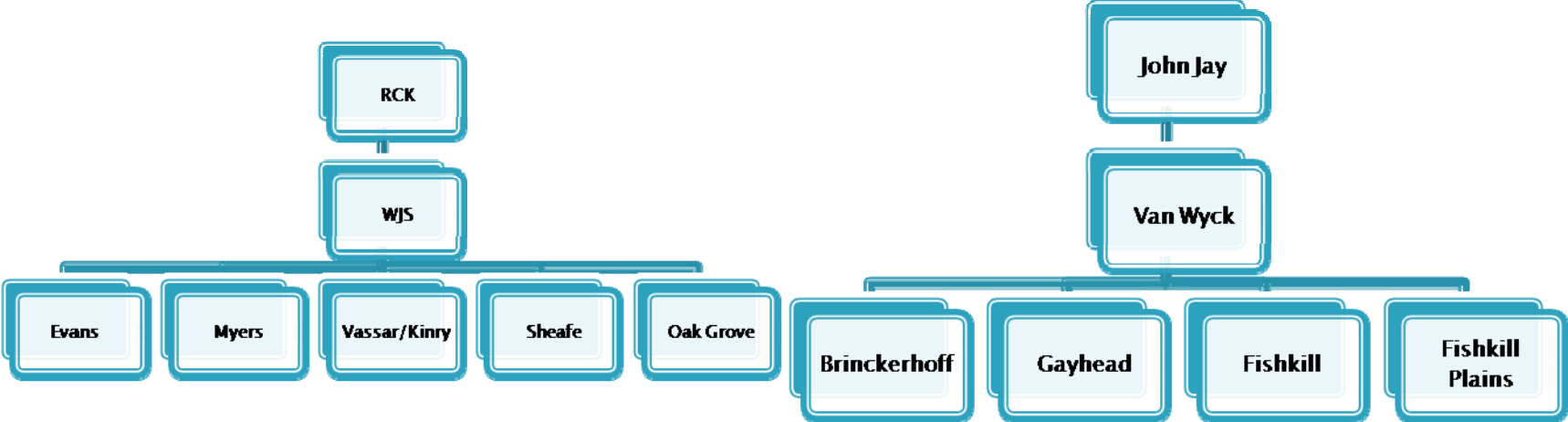
- The Ketcham and John Jay sides of district will have different grade level configurations at the elementary and junior high levels. Wappingers Junior High will still be 7-8, and Van Wyck Junior High will be 6-8. This may create a perception of inequity among parents and the community.
- This alternative does not complete final transition to WCSD’s ultimate goal of having schools configured to the “Middle School Model”: Elementary K-5, Middle 6-8, High 9-12.
- This alternative does have minor boundary shifts, so there will be some “redistricting” of families to new elementary schools – specifically Worley Homes.
- Sheafe Road, Vassar Road and Evans will not have much “breathing room.” All available classroom space will be used, although sections will not be filled to contractual limits.

FINANCIAL ANALYSIS OF ALTERNATIVE #1

Transportation Total Cost Savings Estimate: \$58, 795

1. Fishkill directly to Van Wyck: (81 students) = **\$13,235** fuel and driving hour savings
2. Oak Grove Becomes K-6: (78 students) = **\$27,142** fuel and driving hour savings
3. Sheafe Becomes K-6: (97 students) = **\$13,963** fuel and driving hour savings
4. Worley Homes to Fishkill Plains: (27 students) = **\$4,455** fuel and driving hour savings

SOLUTION # 1 – RESULTING FEEDER PATTERNS



Special Education Alignments Created by Solution #1. Year 1 of Phase in (2010-11)

<u>Brinckerhoff</u>	<u>Evans</u>	<u>Fishkill</u>	<u>Fishkil Plains</u>	<u>Gayhead</u>	<u>Vassar</u>	<u>Kinry</u>	<u>Myers</u>	<u>Oak Grove</u>	<u>Sheafe</u>
SC K-1	SC K-1	SC 2-3	ICT K	LB1-2	Comm K-1-2	SC 4-5	ICT K (.5)	ICT 4 (.5)	ICT K (.5)
SC 2-3	SC 2-3	ICT 4	ICT 1	LB3	SC 2-3	SC 5-6	ICT 1	ICT 5 (.5)	ICT 1
SC 4-5	Comm K-1-2	RR (.5)	ICT 3	LB4	ICT 3 (.5)	ICT 4	ICT 2	ICT 6	ICT 2
ICT 5			ICT 4	LB5	RR (.5)	ICT 5	ICT 3	SC K-1	ICT 3
ESL (1.5)			ICT 5	ICT 3		ICT 6	ICT 4		ICT 4
RR (1.5)			RR	ICT 4 (2)			ICT 5 (1.5)		ICT 5
				ICT 5 (2)			ICT 6 (2)		ICT 6
				Comm 4-5-6			SC 5-6 (2)		
				RR					

(Based on actual need provided by Special Education Department)

Special Education Alignments Created by Solution #1. Year 2 of Phase In (2011-12)

<u>Brinckerhoff</u>	<u>Evans</u>	<u>Fishkill</u>	<u>F. Plains</u>	<u>Gayhead</u>	<u>Vassar</u>	<u>Kinry</u>	<u>Myers</u>	<u>Oak Grove</u>	<u>Sheafe</u>
SC 1-2	SC K-1	SC 2-3	ICT K	LB1-2	SC K-1	SC 4	Comm K-1	ICT 4	ICT K (.5)
SC 2-3	SC 2-3	ICT 5	ICT 1	LB3	SC 2-3	SC 5	Com 1-2-3	ICT 5	ICT 1
SC 4-5		RR (.5)	ICT 2	LB4	ICT 2(.5)	SC 6	Comm 4-5	ICT 6	ICT 2
ESL (1.5)			ICT 3	LB5	ICT 3(.5)	ICT 4	ICT K(.5)		ICT 3
RR (1.5)			ICT 4	ICT 1	RR (.5)	ICT 5	ICT1		ICT 4
			ICT 5	ICT 2		ICT 6	ICT2		ICT 5
			RR	ICT 3			ICT 3		ICT 6
				ICT 4 (2)			ICT 4 (.5)		
				ICT 5 (2)			ICT 5		
				RR			ICT 6		
							SC 5-6		

Space and Enrollment Chart B - Alternative 1 Rooms - All RCK Elementaries K-6

09-10 STATUS QUO REMAINS

	K	1	2	3	4	5	6	SC	Inclusion Teachers	TOTAL	Available Rooms	Difference	5/6/2010 Notes
BRINKERHOFF	82	90	89	77	105	103	0	37		583			
#Teachers	2	4	4	3	5	4	0	3	1	26			
#Rooms	2	4	4	3	5	4	0	3		25	26	1	
Ave. Class Size	20.5	22.5	22.25	25.67	21	25.75	0	12.33					
EVANS	49	49	61	46	43	53	38	32		371			
#Teachers	1	3	3	2	2	2	2	3		18			
#Rooms	1	3	3	2	2	2	2	3		18	18	0	
Ave. Class Size	24.5	16.33	20.33	23	21.5	26.5	19	10.67					
FISHKILL	71	100	82	85	79	80	0	11		508			
#Teachers	2	4	4	4	4	3	0	1	2	24			
#Rooms	2	4	4	4	4	3	0	1		22	22	0	
Ave. Class Size	17.75	25	20.5	21.25	19.75	26.67	0	11					
FISHKILL PLAINS	84	90	115	106	116	71	0	12		594			
#Teachers	2	4	5	5	5	3	0	1	2	27			
#Rooms	2	4	5	5	5	3	0	1		25	27	2	
Ave. Class Size	21	22.5	23	21.2	23.2	23.67	0	12					
GAYHEAD	144	174	154	200	171	177	0	27		1047			
#Teachers	3	7	6	8	7	7	0	3	6	47			
#Rooms	3	7	6	8	7	7	0	3		41	42	1	
Ave. Class Size	24	24.86	25.67	25	24.43	25.29	0	9					
KINRY ROAD	0	0	0	0	116	120	179	12		427			
#Teachers	0	0	0	0	5	5	8	1	1	20			
#Rooms	0	0	0	0	5	5	8	1		19	19	0	
Ave. Class Size	0	0	0	0	23.2	24	22.38	12					
MYERS CORNERS	59	95	99	106	90	108	260	12		829			
#Teachers	1.5	5	4	5	4	4	11	1	8	43.5			
#Rooms	2	5	4	5	4	4	11	1		36	37	1	
Ave. Class Size	19.67	19	24.75	21.2	22.5	27	23.64	12					
OAK GROVE	56	64	52	54	62	77	0	36		401			
#Teachers	1.5	3	3	3	3	3	0	3		19.5			
#Rooms	2	3	3	3	3	3	0	3		20	22	2	
Ave. Class Size	18.67	21.33	17.33	18	20.67	25.67	0	12					
SHEAFE ROAD	70	97	92	88	75	80	0	23		525			
#Teachers	2	5	4	4	3	4	0	2	5	29			
#Rooms	2	5	4	4	3	4	0	2		24	25	1	
Ave. Class Size	17.5	19.4	23	22	25	20	0	11.5					
VASSAR ROAD	98	91	95	99	0	0	0	7		390			
#Teachers	2	5	4	4	0	0	0	1	1	17			
#Rooms	2	5	4	4	0	0	0	1		16	17	1	
Ave. Class Size	24.5	18.2	23.75	24.75	0	0	0	7					
TOTALS	713	850	839	861	857	869	477	209		271			

Space and Enrollment Chart B - Alternative 1 Rooms - All RCK Elementaries K-6

10-11 Evans, Sheafe, Myers, Oak,V/Kinry K-6, Fishkill to VWJH										Inclusion		Available		
	K	1	2	3	4	5	6	SC	Teachers	TOTAL	Rooms	Difference	Notes	
BRINKERHOFF	94	107	96	99	88	113	0	38		635			ESL from Gayhead added to each grade	
#Teachers	2	4	4	4	4	4	0	3	1	26			1 INC student from Fishkill 2nd grade	
#Rooms	2	4	4	4	4	4	0	3		25	26	1		
Ave. Class Size	23.5	26.75	24	24.75	22	28.25	0	12.67						
EVANS	50	57	48	62	47	44	54	32		394				
#Teachers	1	3	2	3	2	2	2	3		18				
#Rooms	1	3	2	3	2	2	2	3		18	18	0		
Ave. Class Size	25	19	24	20.67	23.5	22	27	10.67						
FISHKILL	72	83	88	83	87	81	0	12		506			ICT 1 to FP	
#Teachers	2	4	4	4	4	3	0	1	1	23			10 ICT students back to home schools	
#Rooms	2	4	4	4	4	3	0	1		22	22	0	3 Myers,2 Sheafe,1 Gayhead, 2 Oak, 1 FP, 1 Brinck-2nd grade	
Ave. Class Size	18	20.75	22	20.75	21.75	27	0	12						
FISHKILL PLAINS	89	102	96	122	115	120	0	0		644			Plus Worley homes	
#Teachers	2	4	4	5	5	5	0	0	2	27			LB 5 to Gayhead	
#Rooms	2	4	4	5	5	5	0	0		25	27	2	1 ICT student from Fishkill 2nd grade	
Ave. Class Size	22.25	25.5	24	24.4	23	24	0	0						
GAYHEAD	135	158	164	149	197	171	0	50		1024			ESL to Brinck, recapture ESL rooms	
#Teachers	3	7	7	7	8	7	0	5	6	50			recapture pr. library, Sp. Ed to AIS suite	
#Rooms	3	7	7	7	8	7	0	5		44	44	0	Add LB 1-2 , LB 5	
Ave. Class Size	22.5	22.57	23.43	21.29	24.63	24.43	0	10						
KINRY ROAD	0	0	0	0	102	120	121	24		367			Add SC 4-5 from Oak	
#Teachers	0	0	0	0	5	5	5	2	1	18			Keep SC 6, now from Sheafe	
#Rooms	0	0	0	0	5	5	5	2		17	19	2		
Ave. Class Size	0	0	0	0	20.4	24	24.2	12						
MYERS CORNERS	56	65	89	94	103	90	114	24		635			Worley homes to F. Plains	
#Teachers	1.5	3	4	4	4	4	5	2	8	35.5			Sheafe 6th to Sheafe, Fishkill 6th to VW	
#Rooms	2	3	4	4	4	4	5	2		28	37	9	3 ICT from Fishkill - 2nd grade	
Ave. Class Size	18.67	21.67	22.25	23.5	25.75	22.5	22.8	12					2 SC 5/6 this year	
OAK GROVE	57	66	65	53	56	64	79	11		451			Keep 6th grade, Add ICT 6	
#Teachers	1.5	3	3	3	3	3	3	1		20.5			Remove LB 1-2 to Gayhead	
#Rooms	2	3	3	3	3	3	3	1		21	22	1	Remove SC 4-5 to Kinry	
Ave. Class Size	19	22	21.67	17.67	18.67	21.33	26.33	0					2 ICT students from Fishkill 2nd grade	
SHEAFE ROAD	71	82	97	93	91	77	82	0		593			Remove SC 2-3 to Vassar	
#Teachers	2	4	4	4	4	4	3	0	5	30			Remove SC 6 to Kinry, Add ICT 6	
#Rooms	2	4	4	4	4	4	3	0		25	25	0	2 ICT students from Fishkill 2nd grade	
Ave. Class Size	17.75	20.5	24.25	23.25	22.75	19.25	27.33	0						
VASSAR ROAD	99	115	89	96	0	0	0	19		418			Add SC 2-3 from Sheafe	
#Teachers	2	5	4	4	0	0	0	2	1	18				
#Rooms	2	5	4	4	0	0	0	2		17	17	0		
Ave. Class Size	24.75	23	22.25	24	0	0	0	9.5						
TOTALS	723	835	832	851	886	880	450	210		266				

Space and Enrollment Chart B - Alternative 1 Rooms - All RCK Elementaries K-6

11-12 RCK Elementaries K-6, JJ Elementaries K-5)

	K	1	2	3	4	5	6	SC	Inclusion Teachers	TOTAL	Available		
											Rooms	Difference	Notes
BRINKERHOFF	94	108	105	97	99	91	0	38		632			
#Teachers	2	4	4	4	4	4	0	3	1	26			
#Rooms	2	4	4	4	4	4	0	3		25	26	1	
Ave. Class Size	23.5	27	26.25	24.25	24.75	22.75	0	12.67					
EVANS	50	59	56	48	63	49	45	22		392			
#Teachers	1	3	3	2	3	2	2	2		18			
#Rooms	1	3	3	2	3	2	2	2		18	18	0	
Ave. Class Size	25	19.67	18.67	24	21	24.5	22.5	11					
FISHKILL	72	84	81	89	85	90	0	12		513			
#Teachers	2	4	3	4	4	4	0	1	1	23			10 ICT students back to home schools
#Rooms	2	4	3	4	4	4	0	1		22	22		3 Myers,2 Sheafe,1 Gayhead, 2 Oak,
Ave. Class Size	18	21	27	22.25	21.25	22.5	0	12					0 1 FP, 1 Brinck-3rd grade
FISHKILL PLAINS	89	104	100	97	126	118	0	0		634			
#Teachers	2	4	4	4	5	5	0	0	2	26			
#Rooms	2	4	4	4	5	5	0	0		24	27	3	
Ave. Class Size	22.25	26	25	24.25	25.2	23.6	0	0					
GAYHEAD	135	160	154	162	151	203	0	42		1007			
#Teachers	3	7	7	7	7	8	0	3	6	48			
#Rooms	3	7	7	7	7	8	0	3		42	44	2	
Ave. Class Size	22.5	22.86	22	23.14	21.57	25.38	0	14					
KINRY ROAD	0	0	0	0	99	105	121	24		349			
#Teachers	0	0	0	0	5	5	5	2	1	18			
#Rooms	0	0	0	0	5	5	5	2		17	19	2	
Ave. Class Size	0	0	0	0	19.8	21	24.2	12					
MYERS CORNERS	56	66	64	90	97	106	99	37		615			
#Teachers	1.5	3	3	4	5	5	5	4	8	38.5			
#Rooms	2	3	3	4	5	5	5	4		31	37	6	
Ave. Class Size	18.67	22	21.33	22.5	19.4	21.2	19.8	9.25					
OAK GROVE	57	67	64	65	54	57	66	0		430			
#Teachers	1.5	3	3	3	3	3	3	0		19.5			
#Rooms	2	3	3	3	3	3	3	0		20	22	2	
Ave. Class Size	19	22.33	21.33	21.67	18	19	22	0					
SHEAFE ROAD	71	83	80	98	96	93	79	0		600			
#Teachers	1.5	4	4	4	4	4	3	0	5	29.5			
#Rooms	2	4	4	4	4	4	3	0		25	25	0	
Ave. Class Size	23.67	20.75	20	24.5	24	23.25	26.33	0					
VASSAR ROAD	99	116	112	90	0	0	0	23		440			
#Teachers	2	5	4	4	0	0	0	2	1	18			
#Rooms	2	5	4	4	0	0	0	2		17	17	0	
Ave. Class Size	24.75	23.2	28	22.5	0	0	0	11.5					
TOTALS	723	847	816	836	870	912	410	198		264.5			

Space and Enrollment Chart B - Alternative 1 Rooms - All RCK Elementaries K-6

12-13 RCK Elementaries K-6, JJ Elementaries K-5									Inclusion Teachers	TOTAL	Available		
	K	1	2	3	4	5	6	SC			Rooms	Difference	Notes
BRINKERHOFF	94	108	106	106	99	104	0	40		657			
#Teachers	2	4	4	4	4	4	0	3	1	26			
#Rooms	2	4	4	4	4	4	0	3		25	26		1
Ave. Class Size	23.5	27	26.5	26.5	24.75	26	0	13.33					
EVANS	50	59	57	57	50	65	50	22		410			
#Teachers	1	3	3	2	2	3	2	2		18			
#Rooms	1	3	3	2	2	3	2	2		18	18		0
Ave. Class Size	25	19.67	19	28.5	25	21.67	25	11					
FISHKILL	72	84	83	82	92	88	0	12		513			
#Teachers	1.5	4	4	4	4	3	0	1	1	22.5			10 ICT students back to home schools 3 Myers, 2 Sheafe, 1 Gayhead, 2 Oak,
#Rooms	2	4	4	4	4	3	0	1		22	22		0 1 FP, 1 Brinck-4th grade
Ave. Class Size	24	21	20.75	20.5	23	29.33	0	12					
FISHKILL PLAINS	89	104	101	101	99	129	0	0		623			
#Teachers	2	4	4	4	4	5	0	0	3	26			
#Rooms	2	4	4	4	4	5	0	0		23	27		4
Ave. Class Size	22.25	26	25.25	25.25	24.75	25.8	0	0					
GAYHEAD	146	171	167	167	178	165	0	42		1036			
#Teachers	3	7	7	7	7	7	0	3	6	47			
#Rooms	3	7	7	7	7	7	0	3		41	44		3
Ave. Class Size	24.33	24.43	23.86	23.86	25.43	23.57	0	14					
KINRY ROAD	0	0	0	0	93	102	108	24		327			
#Teachers	0	0	0	0	4	5	5	2	1	17			
#Rooms	0	0	0	0	4	5	5	2		16	19		3
Ave. Class Size	0	0	0	0	23.25	20.4	21.6	12					
MYERS CORNERS	56	66	65	64	93	100	118	37		599			K-3 #s seem low for Myers
#Teachers	1.5	3	3	3	4	5	5	4	8	36.5			
#Rooms	2	3	3	3	4	5	5	4		29	37		8
Ave. Class Size	18.67	22	21.67	21.33	23.25	20	23.6	9.25					
OAK GROVE	57	67	65	65	67	56	59	0		436			
#Teachers	1.5	3	3	3	3	3	3	0		19.5			
#Rooms	2	3	3	3	3	3	3	0		20	22		2 Room Count typo - was 24
Ave. Class Size	19	22.33	21.67	21.67	22.33	18.67	19.67	0					
SHEAFE ROAD	71	83	81	81	101	99	95	0		611			
#Teachers	1.5	4	4	3	4	4	4	0	5	29.5			
#Rooms	2	4	4	3	4	4	4	0		25	25		0
Ave. Class Size	23.67	20.75	20.25	27	25.25	24.75	23.75	0					
VASSAR ROAD	99	116	114	114	0	0	0	23		466			
#Teachers	2	5	5	4	0	0	0	2	1	19			
#Rooms	2	5	5	4	0	0	0	2		18	17		-1
Ave. Class Size	24.75	23.2	22.8	28.5	0	0	0	11.5					
TOTALS	734	858	839	837	872	908	430	200		261			

Space and Enrollment Chart B - Alternative 1 Rooms - All RCK Elementaries K-6

13-14 Elementaries K-6, JJ Elementaries K-5

	K	1	2	3	4	5	6	SC	Inclusion Teachers	TOTAL	Available Rooms	Difference	NOTES
BRINKERHOFF	94	108	106	107	109	102	0	41		667			
#Teachers	2	4	4	4	4	4	0	3	1	26			
#Rooms	2	4	4	4	4	4	0	3		25	26	1	
Ave. Class Size	23.5	27	26.5	26.75	27.25	25.5	0	13.67					
EVANS	50	59	57	58	58	51	67	22		422			
#Teachers	1	3	3	3	3	2	3	2		20			K was 1.5 teachers / 2 rooms
#Rooms	1	3	3	3	3	2	3	2		20	18	-2	
Ave. Class Size	25	19.67	19	19.33	19.33	25.5	22.33	11					
FISHKILL	72	84	83	83	85	85	0	12		504			
#Teachers	1.5	4	4	3	3	4	0	1	1	21.5			10 ICT students back to home schools 3 Myers, 2 Sheafe, 1 Gayhead, 2 Oak,
#Rooms	2	4	4	3	3	4	0	1		21	22		1 1 FP, 1 Brinck-5th grade
Ave. Class Size	24	21	20.75	27.67	28.33	21.25	0	12					
FISHKILL PLAINS	89	104	101	102	104	102	0	0		602			
#Teachers	2	4	4	4	4	4	0	0	2	24			
#Rooms	2	4	4	4	4	4	0	0		22	27	5	
Ave. Class Size	22.25	26	25.25	25.5	26	25.5	0	0					
GAYHEAD	135	160	156	158	161	176	0	42		988			
#Teachers	3	7	7	7	7	8	0	3	6	48			
#Rooms	3	7	7	7	7	8	0	3		42	44	2	
Ave. Class Size	22.5	22.86	22.29	22.57	23	22	0	14					
KINRY ROAD	0	0	0	0	116	96	105	24		341			
#Teachers	0	0	0	0	5	5	5	2	1	18			
#Rooms	0	0	0	0	5	5	5	2		17	19	2	
Ave. Class Size	0	0	0	0	23.2	19.2	21	12					
MYERS CORNERS	56	66	65	66	66	96	112	37		564			K-4 #s seem low for Myers
#Teachers	1.5	3	3	3	3	4	5	4	8	34.5			
#Rooms	2	3	3	3	3	4	5	4		27	37	10	
Ave. Class Size	18.67	22	21.67	22	22	24	22.4	9.25					
OAK GROVE	57	67	65	66	67	69	58	0		449			
#Teachers	1.5	3	3	3	3	3	3	0		19.5			
#Rooms	2	3	3	3	3	3	3	0		20	22	2	
Ave. Class Size	19	22.33	21.67	22	22.33	23	19.33	0					
SHEAFE ROAD	71	83	81	82	83	104	101	0		605			
#Teachers	1.5	4	3	4	4	4	4	0	5	29.5			
#Rooms	2	4	3	4	4	4	4	0		25	25	0	
Ave. Class Size	23.67	20.75	27	20.5	20.75	26	25.25	0					
VASSAR ROAD	99	116	114	115	0	0	0	23		467			
#Teachers	2	5	4	4	0	0	0	2	1	18			
#Rooms	2	5	4	4	0	0	0	2		17	17	0	
Ave. Class Size	24.75	23.2	28.5	28.75	0	0	0	11.5					
TOTALS	723	847	828	837	849	881	443	201		259			

Space and Enrollment Chart B - Alternative 1 Rooms - All RCK Elementaries K-6

14-15 Elementaries K-6, JJ Elementaries K-5

	K	1	2	3	4	5	6	SC	Inclusion Teachers	TOTAL	Available Rooms	Difference	Notes
BRINKERHOFF	94	108	106	107	110	112	0	41		678			
#Teachers	2	4	4	4	4	4	0	3	1	26			
#Rooms	2	4	4	4	4	4	0	3		25	26	1	
Ave. Class Size	23.5	27	26.5	26.75	27.5	28	0	13.67					
EVANS	50	59	57	58	60	60	52	22		418			
#Teachers	1	3	3	3	3	2	2	2		19			
#Rooms	1	3	3	3	3	2	2	2		19	18	-1	4th grade rooms was 2 - typo
Ave. Class Size	25	19.67	19	19.33	20	30	26	11					
FISHKILL	72	84	83	83	86	87	0	12		507			
#Teachers	1.5	4	4	4	4	3	0	1	1	22.5			
#Rooms	2	4	4	4	4	3	0	1		22	22	0	
Ave. Class Size	24	21	20.75	20.75	21.5	29	0	12					
FISHKILL PLAINS	89	104	101	102	105	107	0	0		608			
#Teachers	2	4	4	4	5	5	0	0	3	27			
#Rooms	2	4	4	4	5	5	0	0		24	27	3	
Ave. Class Size	22.25	26	25.25	25.5	21	21.4	0	0					
GAYHEAD	135	160	156	158	163	166	0	42		980			
#Teachers	3	7	7	7	7	7	0	3	6	47			
#Rooms	3	7	7	7	7	7	0	3		41	44	3	Room count typo - was 42
Ave. Class Size	22.5	22.86	22.29	22.57	23.29	23.71	0	14					
KINRY ROAD	0	0	0	0	118	120	99	24		361			
#Teachers	0	0	0	0	5	5	4	2	1	17			
#Rooms	0	0	0	0	5	5	4	2		16	19	3	
Ave. Class Size	0	0	0	0	23.6	24	24.75	12					3 from Fishkill in 2010-11
MYERS CORNERS	56	66	65	65	68	69	109	37		535			
#Teachers	1.5	3	3	3	3	3	4	4	8	32.5			
#Rooms	2	3	3	3	3	3	4	4		25	37	12	
Ave. Class Size	18.67	22	21.67	21.67	22.67	23	27.25	9.25					
OAK GROVE	57	67	65	66	68	69	71	0		463			2 from Fishkill in 2010-11
#Teachers	1.5	3	3	3	3	3	3	0		19.5			
#Rooms	2	3	3	3	3	3	3	0		20	22	2	
Ave. Class Size	19	22.33	21.67	22	22.67	23	23.67	0					
SHEAFE ROAD	71	83	81	82	85	86	106	0		594			2 from Fishkill in 2010-11
#Teachers	1.5	4	4	4	4	3	4	0	5	29.5			
#Rooms	2	4	4	4	4	3	4	0		25	25	0	
Ave. Class Size	23.67	20.75	20.25	20.5	21.25	28.67	26.5	0					
VASSAR ROAD	99	116	114	115	0	0	0	23		467			
#Teachers	2	5	4	4	0	0	0	2	1	18			
#Rooms	2	5	4	4	0	0	0	2		17	17	0	
Ave. Class Size	24.75	23.2	28.5	28.75	0	0	0	11.5					
TOTALS	723	847	828	836	863	876	437	201		258			

Updated April 2010 to reflect Special Ed. needs for 2010-11

OTHER OPPORTUNITIES CREATED BY ALTERNATIVE #1

Adopting Alternative # 1 creates opportunities for the Board of Education to consider. These opportunities are not required to implement Alternative #1. They are made possible by the implementation of Alternative # 1.

1. Opportunity for Consideration: Move part of Edgehill Community to Myers Corners from Vassar / Kinry.

This neighborhood is geographically closer to Myers Corners, and would result in significant cost savings for Transportation, and significantly shorter bus rides for students. This would help move more students into Myers Corners, which loses population by no longer being a 6th grade center for Sheafe Road and Fishkill. It also provides breathing room for Vassar, which is a small building with only 19 available classrooms.

A map of the area that could be moved to Myers is attached.

Transportation Savings: \$12,088.40

2. Opportunity for Consideration: Move the neighborhoods from Roberts Lane up to west side of Route 9 to Myers Corners from Evans.

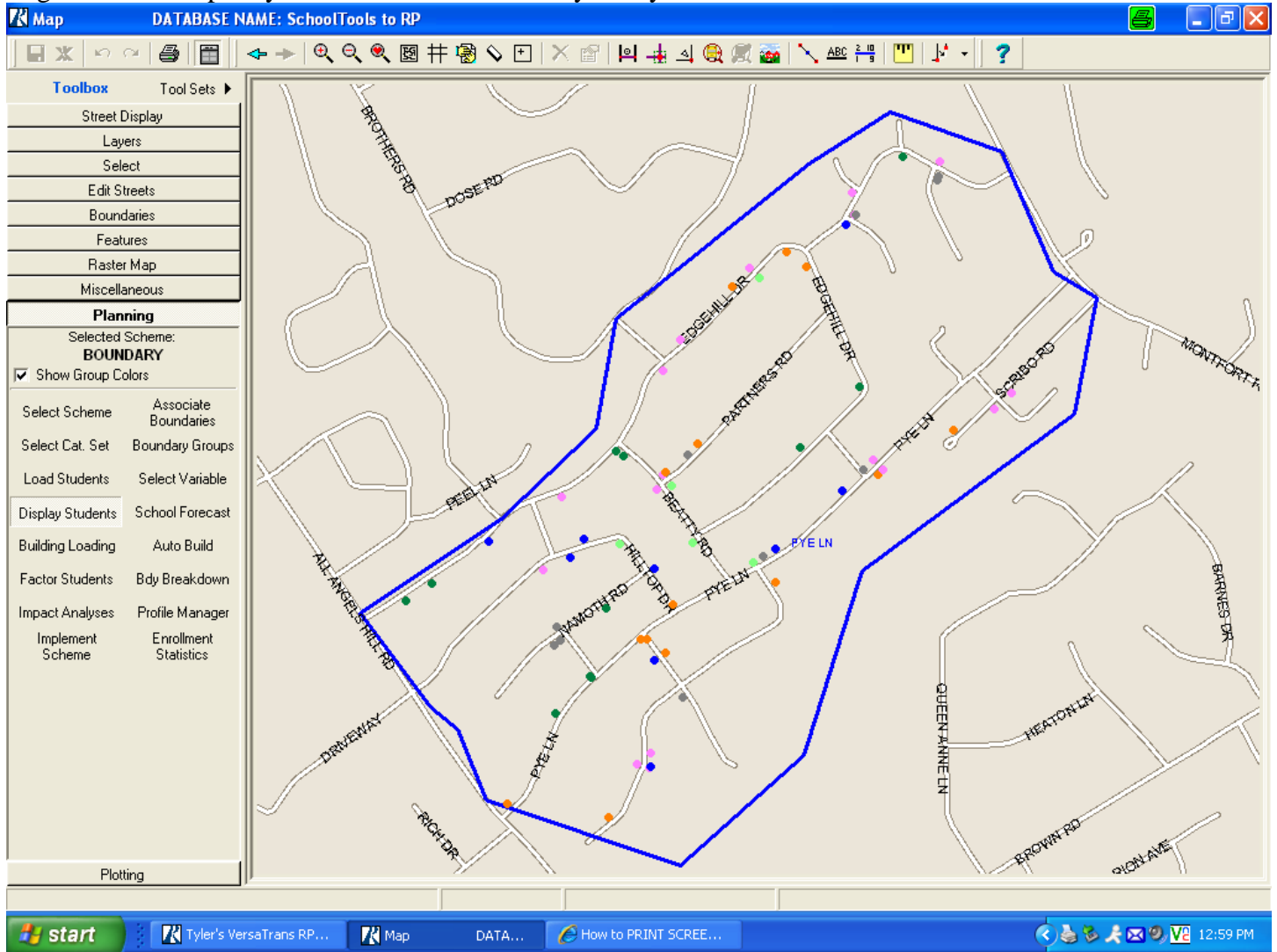
This neighborhood is geographically closer to Myers Corners, and would increase safety of the bus routes as buses would not have to cross Route 9 with elementary children aboard to get to and from Evans. This would help move more students into Myers Corners, which loses population by no longer being a 6th grade center for Sheafe Road and Fishkill. It also provides breathing room for Evans, which is a small building with only 18 available classrooms for grades K-6.

A map of the area that could be moved to Myers is attached.

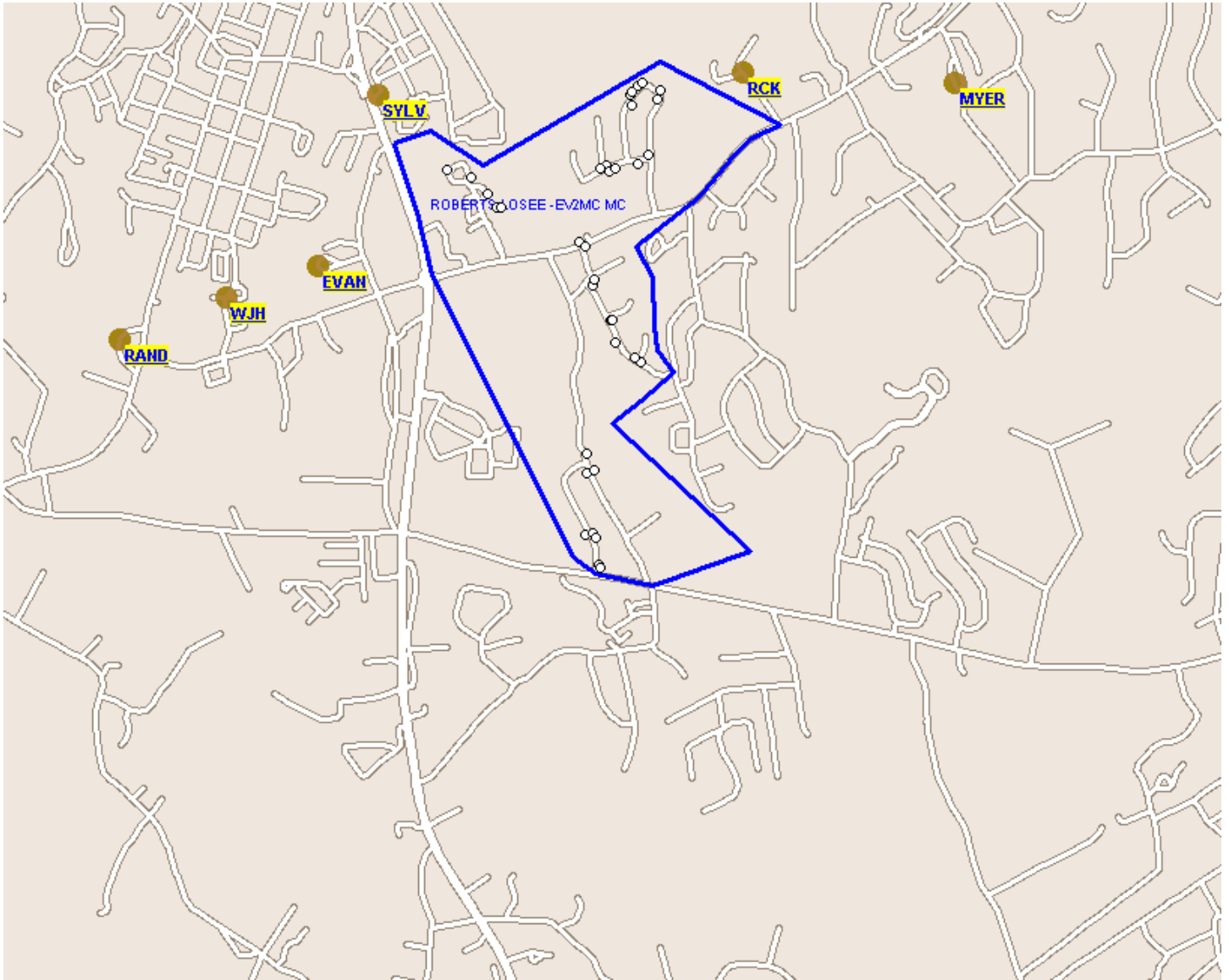
Transportation Savings: There are no transportation savings, as Myers and Evans are near each other.

A spreadsheet that includes the movement of all three of these neighborhoods to Myers Corners follows (Pages 1C – 6C).

Edgehill Area Map – Pye Lane from Vassar / Kinry to Myers Corners



West of Route 9 – From Evans to Myers – Map



Space and Enrollment Chart C - Alternative 1 Rooms - All RCK Elementaries K-6, with Neighborhoods moved to Myers

09-10 STATUS QUO REMAINS

	K	1	2	3	4	5	6	SC	Inclusion Teachers	TOTAL	Available Rooms	Difference	5/6/2010 Notes
BRINKERHOFF	82	90	89	77	105	103	0	37		583			
#Teachers	2	4	4	3	5	4	0	3	1	26			
#Rooms	2	4	4	3	5	4	0	3		25	26	1	
Ave. Class Size	20.5	22.5	22.25	25.67	21	25.75	0	12.33					
EVANS	49	49	61	46	43	53	38	32		371			
#Teachers	1	3	3	2	2	2	2	3		18			
#Rooms	1	3	3	2	2	2	2	3		18	18	0	
Ave. Class Size	24.5	16.33	20.33	23	21.5	26.5	19	10.67					
FISHKILL	71	100	82	85	79	80	0	11		508			
#Teachers	2	4	4	4	4	3	0	1	2	24			
#Rooms	2	4	4	4	4	3	0	1		22	22	0	
Ave. Class Size	17.75	25	20.5	21.25	19.75	26.67	0	11					
FISHKILL PLAINS	84	90	115	106	116	71	0	12		594			
#Teachers	2	4	5	5	5	3	0	1	2	27			
#Rooms	2	4	5	5	5	3	0	1		25	27	2	
Ave. Class Size	21	22.5	23	21.2	23.2	23.67	0	12					
GAYHEAD	144	174	154	200	171	177	0	27		1047			
#Teachers	3	7	6	8	7	7	0	3	6	47			
#Rooms	3	7	6	8	7	7	0	3		41	42	1	
Ave. Class Size	24	24.86	25.67	25	24.43	25.29	0	9					
KINRY ROAD	0	0	0	0	116	120	179	12		427			
#Teachers	0	0	0	0	5	5	8	1	1	20			
#Rooms	0	0	0	0	5	5	8	1		19	19	0	
Ave. Class Size	0	0	0	0	23.2	24	22.38	12					
MYERS CORNERS	59	95	99	106	90	108	260	12		829			
#Teachers	1.5	5	4	5	4	4	11	1	8	43.5			
#Rooms	2	5	4	5	4	4	11	1		36	37	1	
Ave. Class Size	19.67	19	24.75	21.2	22.5	27	23.64	12					
OAK GROVE	56	64	52	54	62	77	0	36		401			
#Teachers	1.5	3	3	3	3	3	0	3		19.5			
#Rooms	2	3	3	3	3	3	0	3		20	22	2	
Ave. Class Size	18.67	21.33	17.33	18	20.67	25.67	0	12					
SHEAFE ROAD	70	97	92	88	75	80	0	23		525			
#Teachers	2	5	4	4	3	4	0	2	5	29			
#Rooms	2	5	4	4	3	4	0	2		24	25	1	
Ave. Class Size	17.5	19.4	23	22	25	20	0	11.5					
VASSAR ROAD	98	91	95	99	0	0	0	7		390			
#Teachers	2	5	4	4	0	0	0	1	1	17			
#Rooms	2	5	4	4	0	0	0	1		16	17	1	
Ave. Class Size	24.5	18.2	23.75	24.75	0	0	0	7					
TOTALS	713	850	839	861	857	869	477	209		271			

Updated April 2010 to reflect West of Rt 9 from Evans to Myers, Edgehill to Myers

Space and Enrollment Chart C - Alternative 1 Rooms - All RCK Elementaries K-6, with Neighborhoods moved to Myers

10-11 Evans, Sheafe, Myers, Oak,V/Kinry K-6, Fishkill to VWJH										Inclusion		Available			Notes
	K	1	2	3	4	5	6	SC	Teachers	TOTAL	Rooms	Difference			
BRINKERHOFF	94	107	96	99	88	113	0	38		635			ESL from Gayhead added to each grade		
#Teachers	2	4	4	4	4	4	4	0	3	1	26		1 INC student from Fishkill 2nd grade		
#Rooms	2	4	4	4	4	4	4	0	3		25	26	1		
Ave. Class Size	23.5	26.75	24	24.75	22	28.25	0	12.67							
EVANS	44	51	42	54	35	38	49	32		345			West of Rt 9 to Myers		
#Teachers	1	3	2	3	2	2	2	2	3		18				
#Rooms	1	3	2	3	2	2	2	2	3		18	18	0		
Ave. Class Size	22	17	21	18	17.5	19	24.5	10.67							
FISHKILL	72	83	88	83	87	81	0	12		506			ICT 1 to FP		
#Teachers	2	4	4	4	4	3	0	1	1	23			10 ICT students back to home schools		
#Rooms	2	4	4	4	4	3	0	1		22	22		0 3 Myers, 2 Sheafe, 1 Gayhead, 2 Oak, 1 FP, 1 Brinck-2nd grade		
Ave. Class Size	18	20.75	22	20.75	21.75	27	0	12							
FISHKILL PLAINS	89	102	96	122	115	120	0	0		644			Plus Worley homes		
#Teachers	2	4	4	5	5	5	0	0	2	27			LB 5 to Gayhead		
#Rooms	2	4	4	5	5	5	0	0		25	27		2 1 ICT student from Fishkill 2nd grade		
Ave. Class Size	22.25	25.5	24	24.4	23	24	0	0							
GAYHEAD	135	158	164	149	197	171	0	50		1024			ESL to Brinck, recapture ESL rooms		
#Teachers	3	7	7	7	8	7	0	5	6	50			recapture pr. library, Sp. Ed to AIS suite		
#Rooms	3	7	7	7	8	7	0	5		44	44		0 Add LB 1-2 , LB 5		
Ave. Class Size	22.5	22.57	23.43	21.29	24.63	24.43	0	10							
KINRY ROAD	0	0	0	0	89	110	110	24		333			Add SC 4-5 from Oak		
#Teachers	0	0	0	0	4	5	5	2	1	17			Keep SC 6, now from Sheafe		
#Rooms	0	0	0	0	4	5	5	2		16	19		3 Edgehill to Myers		
Ave. Class Size	0	0	0	0	22.25	22	22	12							
MYERS CORNERS	75	84	108	120	128	106	130	24		775			Worley homes to F. Plains		
#Teachers	1.5	3	4	5	5	4	5	2	8	37.5			Sheafe 6th to Sheafe, Fishkill 6th to VW		
#Rooms	2	3	4	5	5	4	5	2		30	37		7 3 ICT from Fishkill - 2nd grade		
Ave. Class Size	25	28	27	24	25.6	26.5	26	12					2 SC 5/6 this year		
OAK GROVE	57	66	65	53	56	64	79	11		451			Keep 6th grade, Add ICT 6		
#Teachers	1.5	3	3	3	3	3	3	1		20.5			Remove LB 1-2 to Gayhead		
#Rooms	2	3	3	3	3	3	3	1		21	22		1 Remove SC 4-5 to Kinry		
Ave. Class Size	19	22	21.67	17.67	18.67	21.33	26.33	0					2 ICT students from Fishkill 2nd grade		
SHEAFE ROAD	71	82	97	93	91	77	82	0		593			Remove SC 2-3 to Vassar		
#Teachers	2	4	4	4	4	4	3	0	5	30			Remove SC 6 to Kinry, Add ICT 6		
#Rooms	2	4	4	4	4	4	3	0		25	25		0 2 ICT students from Fishkill 2nd grade		
Ave. Class Size	17.75	20.5	24.25	23.25	22.75	19.25	27.33	0							
VASSAR ROAD	86	103	77	78	0	0	0	19		363			Add SC 2-3 from Sheafe		
#Teachers	2	4	3	3	0	0	0	2	1	15			Edgehill to Myers		
#Rooms	2	4	3	3	0	0	0	2		14	17		3		
Ave. Class Size	21.5	25.75	25.67	26	0	0	0	9.5							
TOTALS	723	836	833	851	886	880	450	210		264					

Updated April 2010 to reflect West of Rt 9 from Evans to Myers, Edgehill to Myers

Space and Enrollment Chart C - Alternative 1 Rooms - All RCK Elementaries K-6, with Neighborhoods moved to Myers

	11-12 RCK Elementaries K-6, JJ Elementaries K-5)								Inclusion Teachers	TOTAL	Available		
	K	1	2	3	4	5	6	SC			Rooms	Difference	Notes
BRINKERHOFF	94	108	105	97	99	91	0	38		632			
#Teachers	2	4	4	4	4	4	0	3	1	26			
#Rooms	2	4	4	4	4	4	0	3		25	26	1	
Ave. Class Size	23.5	27	26.25	24.25	24.75	22.75	0	12.67					
EVANS	44	53	50	42	55	37	39	22		342		West of Rt 9 to Myers	
#Teachers	1	3	3	2	2	2	2	2		17			
#Rooms	1	3	3	2	2	2	2	2		17	18	1	
Ave. Class Size	22	17.67	16.67	21	27.5	18.5	19.5	11					
FISHKILL	72	84	81	89	85	90	0	12		513		10 ICT students back to home schools	
#Teachers	2	4	3	4	4	4	0	1	1	23		3 Myers, 2 Sheafe, 1 Gayhead, 2 Oak,	
#Rooms	2	4	3	4	4	4	0	1		22	22	0 1 FP, 1 Brinck-3rd grade	
Ave. Class Size	18	21	27	22.25	21.25	22.5	0	12					
FISHKILL PLAINS	89	104	100	97	126	118	0	0		634			
#Teachers	2	4	4	4	5	5	0	0	2	26			
#Rooms	2	4	4	4	5	5	0	0		24	27	3	
Ave. Class Size	22.25	26	25	24.25	25.2	23.6	0	0					
GAYHEAD	135	160	154	162	151	203	0	42		1007			
#Teachers	3	7	7	7	7	8	0	3	6	48			
#Rooms	3	7	7	7	7	8	0	3		42	44	2	
Ave. Class Size	22.5	22.86	22	23.14	21.57	25.38	0	14					
KINRY ROAD	0	0	0	0	81	92	111	24		308		Edgehill to Myers	
#Teachers	0	0	0	0	5	5	5	2	1	18			
#Rooms	0	0	0	0	5	5	5	2		17	19	2	
Ave. Class Size	0	0	0	0	16.2	18.4	22.2	12					
MYERS CORNERS	75	85	83	108	123	131	115	37		757		Edgehill from Vassar / Kinry	
#Teachers	2	4	4	4	5	5	5	4	8	41		West of Rt 9 from Evans	
#Rooms	2	4	4	4	5	5	5	4		33	37	4	
Ave. Class Size	18.75	21.25	20.75	27	24.6	26.2	23	9.25					
OAK GROVE	57	67	64	65	54	57	66	0		430			
#Teachers	1.5	3	3	3	3	3	3	0		19.5			
#Rooms	2	3	3	3	3	3	3	0		20	22	2	
Ave. Class Size	19	22.33	21.33	21.67	18	19	22	0					
SHEAFE ROAD	71	83	80	98	96	93	79	0		600			
#Teachers	1.5	4	4	4	4	4	3	0	5	29.5			
#Rooms	2	4	4	4	4	4	3	0		25	25	0	
Ave. Class Size	23.67	20.75	20	24.5	24	23.25	26.33	0					
VASSAR ROAD	86	103	99	78	0	0	0	23		389		Edgehill to Myers	
#Teachers	2	4	4	3	0	0	0	2	1	16			
#Rooms	2	4	4	3	0	0	0	2		15	17	2	
Ave. Class Size	21.5	25.75	24.75	26	0	0	0	11.5					
TOTALS	723	847	816	836	870	912	410	198		264			

Updated April 2010 to reflect West of Rt 9 from Evans to Myers, Edgehill to Myers

Space and Enrollment Chart C - Alternative 1 Rooms - All RCK Elementaries K-6, with Neighborhoods moved to Myers

12-13 RCK Elementaries K-6, JJ Elementaries K-5									Inclusion	Available			
	K	1	2	3	4	5	6	SC	Teachers	TOTAL	Rooms	Difference	Notes
BRINKERHOFF	94	108	106	106	99	104	0	40		657			
#Teachers	2	4	4	4	4	4	0	3	1	26			
#Rooms	2	4	4	4	4	4	0	3		25	26	1	
Ave. Class Size	23.5	27	26.5	26.5	24.75	26	0	13.33					
EVANS	44	53	51	51	44	57	38	22		360			West of Rt 9 to Myers
#Teachers	1	2	2	2	2	3	2	2		16			
#Rooms	1	2	2	2	2	3	2	2		16	18	2	
Ave. Class Size	22	26.5	25.5	25.5	22	19	19	11					
FISHKILL	72	84	83	82	92	88	0	12		513			
#Teachers	1.5	4	4	4	4	3	0	1	1	22.5			10 ICT students back to home schools
#Rooms	2	4	4	4	4	3	0	1		22	22		3 Myers, 2 Sheafe, 1 Gayhead, 2 Oak,
Ave. Class Size	24	21	20.75	20.5	23	29.33	0	12					0 1 FP, 1 Brinck-4th grade
FISHKILL PLAINS	89	104	101	101	99	129	0	0		623			
#Teachers	2	4	4	4	4	5	0	0	3	26			
#Rooms	2	4	4	4	4	5	0	0		23	27	4	
Ave. Class Size	22.25	26	25.25	25.25	24.75	25.8	0	0					
GAYHEAD	146	171	167	167	178	165	0	42		1036			
#Teachers	3	7	7	7	7	7	0	3	6	47			
#Rooms	3	7	7	7	7	7	0	3		41	44	3	
Ave. Class Size	24.33	24.43	23.86	23.86	25.43	23.57	0	14					
KINRY ROAD	0	0	0	0	81	84	95	24		284			Edgehill to Myers
#Teachers	0	0	0	0	4	4	4	2	1	15			
#Rooms	0	0	0	0	4	4	4	2		14	19	5	
Ave. Class Size	0	0	0	0	20.25	21	23.75	12					
MYERS CORNERS	75	85	84	83	111	126	143	37		744			West of Rt 9 from Evans
#Teachers	1.5	4	4	4	5	5	6	4	8	41.5			Edgehill from Vassar / Kinry
#Rooms	2	4	4	4	5	5	6	4		34	37	3	
Ave. Class Size	25	21.25	21	20.75	22.2	25.2	23.83	9.25					
OAK GROVE	57	67	65	65	67	56	59	0		436			
#Teachers	1.5	3	3	3	3	3	3	0		19.5			
#Rooms	2	3	3	3	3	3	3	0		20	22	2	Room count typo - was 24
Ave. Class Size	19	22.33	21.67	21.67	22.33	18.67	19.67	0					
SHEAFE ROAD	71	83	81	81	101	99	95	0		611			Room count typo - was 26
#Teachers	1.5	4	4	3	4	4	4	0	5	29.5			3rd grade was 4 sections
#Rooms	2	4	4	3	4	4	4	0		25	25	0	
Ave. Class Size	23.67	20.75	20.25	27	25.25	24.75	23.75	0					
VASSAR ROAD	86	103	99	101	0	0	0	23		412			Edgehill to Myers
#Teachers	2	4	4	4	0	0	0	2	1	17			
#Rooms	2	4	4	4	0	0	0	2		16	17	1	
Ave. Class Size	21.5	25.75	24.75	25.25	0	0	0	11.5					
TOTALS	734	858	837	837	872	908	430	200		260			

Updated April 2010 to reflect West of Rt 9 from Evans to Myers, Edgehill to Myers

Space and Enrollment Chart C - Alternative 1 Rooms - All RCK Elementaries K-6, with Neighborhoods moved to Myers

13-14 Elementaries K-6, JJ Elementaries K-5

	K	1	2	3	4	5	6	SC	Inclusion Teachers	TOTAL	Available Rooms	Difference	NOTES
BRINKERHOFF	94	108	106	107	109	102	0	41		667			
#Teachers	2	4	4	4	4	4	0	3	1	26			
#Rooms	2	4	4	4	4	4	0	3		25	26	1	
Ave. Class Size	23.5	27	26.5	26.75	27.25	25.5	0	13.67					
EVANS	44	53	51	52	52	45	59	22		378			West of Rt 9 to Myers
#Teachers	1	3	2	2	2	2	3	2		17			Kindergarten was 1.5 teachers / 2 rooms
#Rooms	1	3	2	2	2	2	3	2		17	18	1	
Ave. Class Size	22	17.67	25.5	26	26	22.5	19.67	11					
FISHKILL	72	84	83	83	85	85	0	12		504			10 ICT students back to home schools
#Teachers	1.5	4	4	3	3	4	0	1	1	21.5			3 Myers, 2 Sheafe, 1 Gayhead, 2 Oak,
#Rooms	2	4	4	3	3	4	0	1		21	22		1 1 FP, 1 Brinck-5th grade
Ave. Class Size	24	21	20.75	27.67	28.33	21.25	0	12					
FISHKILL PLAINS	89	104	101	102	104	102	0	0		602			
#Teachers	2	4	4	4	4	4	0	0	2	24			
#Rooms	2	4	4	4	4	4	0	0		22	27	5	
Ave. Class Size	22.25	26	25.25	25.5	26	25.5	0	0					
GAYHEAD	135	160	156	158	161	176	0	42		988			
#Teachers	3	7	7	7	7	8	0	3	6	48			
#Rooms	3	7	7	7	7	8	0	3		42	44	2	
Ave. Class Size	22.5	22.86	22.29	22.57	23	22	0	14					
KINRY ROAD	0	0	0	0	103	84	87	24		298			Edgehill to Myers
#Teachers	0	0	0	0	4	4	4	2	1	15			
#Rooms	0	0	0	0	4	4	4	2		14	19	5	
Ave. Class Size	0	0	0	0	25.75	21	21.75	12					
MYERS CORNERS	75	85	84	85	85	114	138	37		703			West of Rt 9 from Evans
#Teachers	1.5	4	4	4	4	5	5	4	8	39.5			Edgehill from Vassar / Kinry
#Rooms	2	4	4	4	4	5	5	4		32	37	5	
Ave. Class Size	25	21.25	21	21.25	21.25	22.8	27.6	9.25					
OAK GROVE	57	67	65	66	67	69	58	0		449			
#Teachers	1.5	3	3	3	3	3	3	0		19.5			
#Rooms	2	3	3	3	3	3	3	0		20	22	2	
Ave. Class Size	19	22.33	21.67	22	22.33	23	19.33	0					
SHEAFE ROAD	71	83	81	82	83	104	101	0		605			
#Teachers	1.5	4	3	4	4	4	4	0	5	29.5			
#Rooms	2	4	3	4	4	4	4	0		25	25	0	
Ave. Class Size	23.67	20.75	27	20.5	20.75	26	25.25	0					
VASSAR ROAD	86	103	99	101	0	0	0	23		412			Edgehill to Myers
#Teachers	2	4	4	4	0	0	0	2	1	17			
#Rooms	2	4	4	4	0	0	0	2		16	17	1	
Ave. Class Size	21.5	25.75	24.75	25.25	0	0	0	11.5					
TOTALS	723	847	826	836	849	881	443	201		257			

Updated April 2010 to reflect West of Rt 9 from Evans to Myers, Edgehill to Myers

Space and Enrollment Chart C - Alternative 1 Rooms - All RCK Elementaries K-6, with Neighborhoods moved to Myers

14-15 Elementaries K-6, JJ Elementaries K-5

	K	1	2	3	4	5	6	SC	Inclusion Teachers	TOTAL	Available Rooms	Difference	Notes
BRINKERHOFF	94	108	106	107	110	112	0	41		678			
#Teachers	2	4	4	4	4	4	0	3	1	26			
#Rooms	2	4	4	4	4	4	0	3		25	26	1	
Ave. Class Size	23.5	27	26.5	26.75	27.5	28	0	13.67					
EVANS	44	53	51	52	54	54	46	22		376			West of Rt 9 to Myers
#Teachers	1	3	2	2	3	3	2	2		18			
#Rooms	1	3	2	2	3	3	2	2		18	18	0	
Ave. Class Size	22	17.67	25.5	26	18	18	23	11					
FISHKILL	72	84	83	83	86	87	0	12		507			
#Teachers	1.5	4	4	4	4	3	0	1	1	22.5			
#Rooms	2	4	4	4	4	3	0	1		22	22	0	
Ave. Class Size	24	21	20.75	20.75	21.5	29	0	12					
FISHKILL PLAINS	89	104	101	102	105	107	0	0		608			
#Teachers	2	4	4	4	5	5	0	0	3	27			
#Rooms	2	4	4	4	5	5	0	0		24	27	3	
Ave. Class Size	22.25	26	25.25	25.5	21	21.4	0	0					
GAYHEAD	135	160	156	158	163	166	0	42		980			
#Teachers	3	7	7	7	7	7	0	3	6	47			
#Rooms	3	7	7	7	7	7	0	3		41	44	3	Room count typo - was 42
Ave. Class Size	22.5	22.86	22.29	22.57	23.29	23.71	0	14					
KINRY ROAD	0	0	0	0	105	107	87	24		323			Edgehill to Myers
#Teachers	0	0	0	0	4	4	4	2	1	15			
#Rooms	0	0	0	0	4	4	4	2		14	19	5	
Ave. Class Size	0	0	0	0	26.25	26.75	21.75	12					
MYERS CORNERS	75	85	84	84	87	88	127	37		667			3 from Fishkill in 2010-11
#Teachers	1.5	4	4	4	4	4	5	4	8	38.5			West of Rt 9 from Evans
#Rooms	2	4	4	4	4	4	5	4		31	37	6	Edgehill from Vassar / Kinry
Ave. Class Size	25	21.25	21	21	21.75	22	25.4	9.25					
OAK GROVE	57	67	65	66	68	69	71	0		463			2 from Fishkill in 2010-11
#Teachers	1.5	3	3	3	3	3	3	0		19.5			
#Rooms	2	3	3	3	3	3	3	0		20	22	2	
Ave. Class Size	19	22.33	21.67	22	22.67	23	23.67	0					
SHEAFE ROAD	71	83	81	82	85	86	106	0		594			2 from Fishkill in 2010-11
#Teachers	1.5	4	4	4	4	3	4	0	5	29.5			
#Rooms	2	4	4	4	4	3	4	0		25	25	0	
Ave. Class Size	23.67	20.75	20.25	20.5	21.25	28.67	26.5	0					
VASSAR ROAD	86	103	99	101	0	0	0	23		412			Edgehill to Myers
#Teachers	2	4	4	4	0	0	0	2	1	17			
#Rooms	2	4	4	4	0	0	0	2		16	17	1	
Ave. Class Size	21.5	25.75	24.75	25.25	0	0	0	11.5					
TOTALS	723	847	826	835	863	876	437	201		260			

Updated April 2010 to reflect West of Rt 9 from Evans to Myers, Edgehill to Myers

ALTERNATIVE # 2-
MAKE KINRY 6TH GRADE CENTER TO WAPPINGERS JUNIOR HIGH SCHOOL

Alternative # 2 is entitled: Make all district elementary schools K-5, and make Kinry Road school a 6th grade center to Wappingers Junior High. The details to accomplish this are:

1. Brinckerhoff will remain a K-5 school.
2. Evans will return to being a K-5 school, 6th grade will go to Kinry.
3. Fishkill will no longer go to Myers Corners for 6th grade center. Fishkill will remain K-5 and go directly to Van Wyck JH.
4. Fishkill Plains will stay a K-5 school. Worley Homes will move here from Myers, giving this neighborhood a consistent pattern to John Jay HS.
5. Gayhead will stay a K-5 school.
6. Kinry Road will convert from a 4-6 school to a 6th grade center over the course of 2 years.
7. Myers Corners will become a K-5 school, 6th grade going to Kinry. To make room at Vassar, the Edgehill neighborhood will move to Myers.
8. Oak Grove will stay a K-5 school, and its students will still go to Kinry for 6th grade.
9. Sheafe Road will stay a K-5 school, with 6th grade going to Kinry instead of Myers.
10. Vassar Road will convert from a K-3 school to a K-5 school over the course of 2 years, with its students going on 6th grade at Kinry.

Making room available necessitates movement of Special Education Services. The following moves will be made:

1. Kinry Road: Adds Communication 6 from Myers Corners.
2. Myers Corners: Removes Communication 6 to Kinry, adds Communication K-1 from Vassar.
3. Oak Grove: Adds Self Contained K-1 from Vassar.
4. Vassar Road : Removes Communications K-1 to Myers.

The attached spreadsheet (Pages 1D – 6D) shows the projected enrollments per school per grade, the number of sections per grade, and the number of available classrooms at each school as determined by a physical count by the Space and Enrollment Committee in January 2010. It also shows the number of teachers needed at each school and in total for Elementary level education each year. Highlighted numbers reflect changes called for in the plan. Boxed numbers indicate where there is a large room shortage or surplus, and the administration may wish to look at this area to make the sections fit in the available number of rooms.

If the Alternative # 2 changes to class configuration and special education alignment are made, and enrollment projections are correct:

1. Brinckerhoff will have one spare room every year through 2014-15, and average class sizes.
2. Evans will have enough rooms through 2014-15, with the potential of some large class sizes in the higher grades.
3. Fishkill will have enough rooms through 2014-15, keeping their modular for 22 rooms, with low class sizes.
4. Fishkill Plains, which has two spare rooms now, will continue to have increasing numbers of spare rooms starting in 2010-11, up to four spare rooms. Class sizes will be average.
5. Gayhead will have enough classrooms through 2014-15 by keeping their modulars. Class sizes will be average – 22-25.
6. Kinry Road will have enough rooms through 2014-15, with average class sizes.

7. Myers Corners will have increasing numbers of free rooms, starting with five in 2010-11 and reaching 14 rooms by 2014-15, with average class sizes.
8. Oak Grove will consistently have one to two spare rooms through 2014-15, with low class sizes.
9. Sheafe Road will consistently have enough rooms through 2014-15. Class sizes will be low.
10. Vassar Road, according to projections, will still be severely short of rooms even with moving Edgehill to Myers Corners. More neighborhoods than originally thought will need to be redistricted, or more special education classes will need to be moved in order to make this plan work.
11. Van Wyck can sustain having the additional students from Fishkill over the next 5 years.

BENEFITS OF ALTERNATIVE #2

- All WCSD elementary schools will have the same K-5 grade configuration.
- All students on Ketcham side of district will transition to one 6th grade center together. There will then be no “home school advantage” (perceived or real) for any students. This will also allow for easier outreach by Wappingers JH administration to help transition to WJH.
- Alternative #2 allows for some alignment of special education classes thus minimizing some of the transitions special education students have to make.
- This will bring WCSD one step closer to ultimate goal of the Middle School Model.
- Van Wyck can sustain the increased enrollment from Fishkill starting at 6th grade instead of 7th grade.

DRAWBACKS OF ALTERNATIVE #2

- This alternative requires redistricting of the entire Edgehill community to Myers Corners plus more than originally considered by the committee.
- This alternative makes some improvements to Special Education classes, but does not finish complete alignment. Due to the realignment of some classes some students will need to initially change buildings. The Communication classes will be housed in two buildings instead of being located in one school.
- Some special education teachers may have concerns about changing buildings due to the realignment of programs.
- This alternative adds one transition for Myers and Evans, which is the opposite of what the committee was charged with accomplishing.
- Alternative #2 creates a “Only One Year” school, which will likely have community issues similar to those of Myers and Kinry where parents chose not to become active in the school because their child is only at the school for one year.
- This alternative does not complete the final transition to the “Middle School Model.”
- This will create some issues for Transportation, with the distance between some RCK Elementaries and Kinry creating long bus runs.
- Parents may object to the moves.

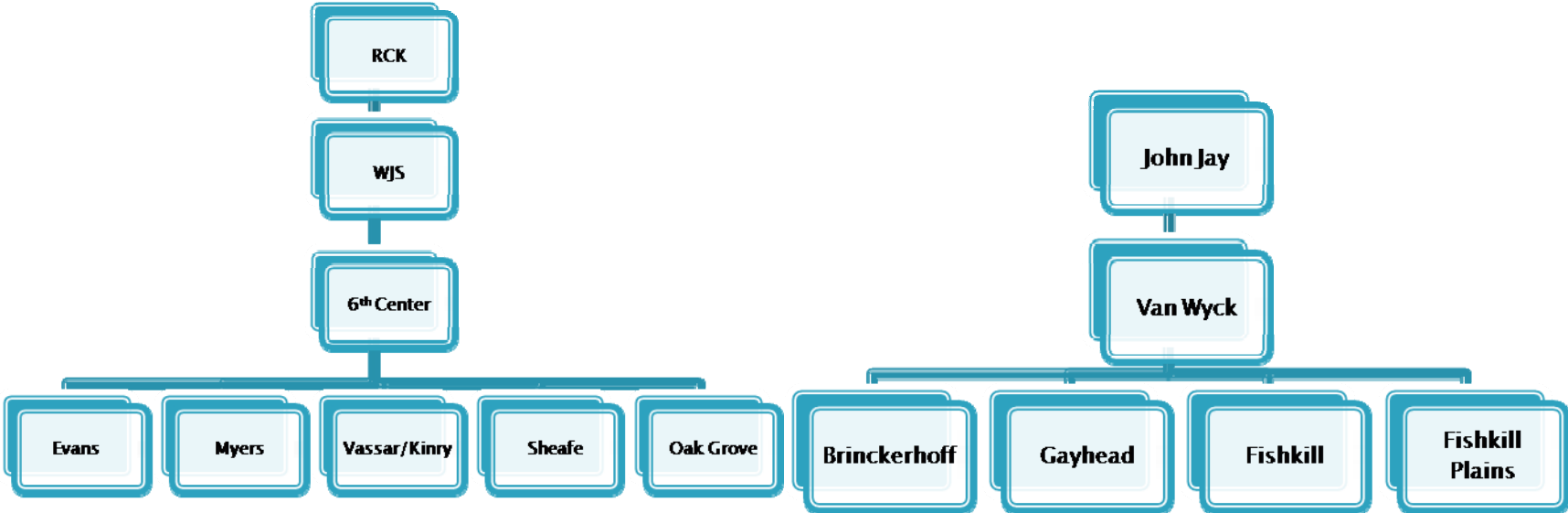
Next steps the committee will take if further consideration is requested by the Board of Education–

1. What other neighborhoods would need to be moved to Myers to make room at Vassar?
2. Should more Special Education moves be made to make room at Vassar?
3. Transportation will need to review the costs – plus and minus – of implementing this plan.

Special Education Alignments Created by Solution #2

<u>Brinckerhoff</u>	<u>Evans</u>	<u>Fishkill</u>	<u>F. Plains</u>	<u>Gayhead</u>	<u>Vassar</u>	<u>Kinry</u>	<u>Myers</u>	<u>Oak Grove</u>	<u>Sheafe</u>
SC 1-2	SC K-1	SC 2-3	ICT K	LB1-2	SC K-1	SC 4	Comm K-1	ICT 4	ICT K
SC 3-4	SC 2-3	ICT 5	ICT 1	LB3	SC 2-3	SC 5	Com 1-2-3	ICT 5	ICT 1
SC 4-5	SC 4-5		ICT 2	LB4	ICT 2(.5)	SC 6	Comm 4-5	ICT 6	ICT 2
ESL (1.5)			ICT 3	LB5	ICT 3(.5)	ICT 4	ICT K(.5)	SC K-1	ICT 3
			ICT 4	ICT 1 (.5)		ICT 5	ICT1	SC 2-3	ICT 4
			ICT 5	ICT 2 (.5)		ICT 6	ICT2	SC 4-5	ICT 5
				ICT 3			ICT 3		ICT 6
				ICT 4 (1.5)			ICT 4 (.5)		
				ICT 5 (2)			ICT 5		
							ICT 6		
							SC 5-6		

SOLUTION # 2 – RESULTING FEEDER PATTERNS



Space and Enrollment Chart D - Alternative #2 - Make Kinry 6th Grade Center to WJH - 2 year rollout

09-10 STATUS QUO

	K	1	2	3	4	5	6	SC	Inclusion Teachers	TOTAL	Available Rooms	Difference	5/6/2010 Notes
BRINKERHOFF	82	90	89	77	105	103	0	37		583			
#Teachers	2	4	4	3	5	4	0	3	1	26			
#Rooms	2	4	4	3	5	4	0	3		25	26	1	
Ave. Class Size	20.5	22.5	22.25	25.67	21	25.75	0	12.33					
EVANS	49	49	61	46	43	53	38	32		371			
#Teachers	1	3	3	2	2	2	2	3		18			
#Rooms	1	3	3	2	2	2	2	3		18	18	0	
Ave. Class Size	24.5	16.33	20.33	23	21.5	26.5	19	10.67					
FISHKILL	71	100	82	85	79	80	0	11		508			
#Teachers	2	4	4	4	4	3	0	1	2	24			
#Rooms	2	4	4	4	4	3	0	1		22	22	0	
Ave. Class Size	17.75	25	20.5	21.25	19.75	26.67	0	11					
FISHKILL PLAINS	84	90	115	106	116	71	0	12		594			
#Teachers	2	4	5	5	5	3	0	1	2	27			
#Rooms	2	4	5	5	5	3	0	1		25	27	2	
Ave. Class Size	21	22.5	23	21.2	23.2	23.67	0	12					
GAYHEAD	144	174	154	200	171	177	0	27		1047			
#Teachers	3	7	6	8	7	7	0	3	6	47			
#Rooms	3	7	6	8	7	7	0	3		41	42	1	
Ave. Class Size	24	24.86	25.67	25	24.43	25.29	0	9					
KINRY ROAD	0	0	0	0	116	120	179	12		427			
#Teachers	0	0	0	0	5	5	8	1	1	20			
#Rooms	0	0	0	0	5	5	8	1		19	19	0	
Ave. Class Size	0	0	0	0	23.2	24	22.38	12					
MYERS CORNERS	59	95	99	106	90	108	260	12		829			
#Teachers	1.5	5	4	5	4	4	11	1	8	43.5			
#Rooms	2	5	4	5	4	4	11	1		36	37	1	
Ave. Class Size	19.67	19	24.75	21.2	22.5	27	23.64	12					
OAK GROVE	56	64	52	54	62	77	0	36		401			
#Teachers	1.5	3	3	3	3	3	0	3		19.5			
#Rooms	2	3	3	3	3	3	0	3		20	22	2	
Ave. Class Size	18.67	21.33	17.33	18	20.67	25.67	0	12					
SHEAFE ROAD	70	97	92	88	75	80	0	23		525			
#Teachers	2	5	4	4	3	4	0	2	5	29			
#Rooms	2	5	4	4	3	4	0	2		24	25	1	
Ave. Class Size	17.5	19.4	23	22	25	20	0	11.5					
VASSAR ROAD	98	91	95	99	0	0	0	7		390			
#Teachers	2	5	4	4	0	0	0	1	1	17			
#Rooms	2	5	4	4	0	0	0	1		16	17	1	
Ave. Class Size	24.5	18.2	23.75	24.75	0	0	0	7					
TOTALS	713	850	839	861	857	869	477	209		271 Teachers			

Space and Enrollment Chart D - Alternative #2 - Make Kinry 6th Grade Center to WJH - 2 year rollout

10-11 Solution #2 Kinry becomes 6th grade center - year 1 of rollout

	10-11 Solution #2 Kinry becomes 6th grade center - year 1 of rollout								Inclusion Teachers	TOTAL	Available		Notes
	K	1	2	3	4	5	6	SC			Rooms	Difference	
BRINKERHOFF	83	96	89	90	79	108	0	38		583			
#Teachers	2	4	4	4	4	5	0	3	1	27			
#Rooms	2	4	4	4	4	5	0	3		26	26	0	
Ave. Class Size	20.75	24	22.25	22.5	19.75	21.6	0	12.67					
EVANS	50	57	48	62	47	44	54	32		394			
#Teachers	1	3	2	3	2	2	2	3		18			
#Rooms	1	3	2	3	2	2	2	3		18	18	0	
Ave. Class Size	25	19	24	20.67	23.5	22	27	10.67					
FISHKILL	72	83	98	83	87	81	0	12		516			To Van Wyck for 6th
#Teachers	2	4	4	3	4	3	0	1	2	23			10 ICT students back to home schools
#Rooms	2	4	4	3	4	3	0	1		21	22	1	3 Myers, 2 Sheafe, 1 Gayhead, 2 Oak,
Ave. Class Size	18	20.75	24.5	27.67	21.75	27	0	12					1 FP, 1 Brinck-2nd grade
FISHKILL PLAINS	89	102	96	122	115	120	0	12		656			Plus Worley Homes from Myers
#Teachers	2	4	4	5	5	5	0	1	2	28			
#Rooms	2	4	4	5	5	5	0	1		26	27	1	
Ave. Class Size	22.25	25.5	24	24.4	23	24	0	12					
GAYHEAD	146	169	170	156	206	176	0	27		1050			
#Teachers	3	7	7	7	8	7	0	3	6	48			
#Rooms	3	7	7	7	8	7	0	3		42	42	0	
Ave. Class Size	24.33	24.14	24.29	22.29	25.75	25.14	0	9					
KINRY ROAD	0	0	0	0	0	120	197	24		341			Kinry becomes 5-6
#Teachers	0	0	0	0	0	5	8	2	1	16			Add Comm 6 from Myers
#Rooms	0	0	0	0	0	5	8	2		15	19	4	09-10 4th grade will stay
Ave. Class Size	0	0	0	0	0	24	24.63	12					through 6th at Kinry
MYERS CORNERS	56	65	89	94	103	90	188	7		692			Move Comm 6 to Kinry
#Teachers	1.5	3	4	5	5	4	8	1	8	39.5			Add Comm from Vassar
#Rooms	2	3	4	5	5	4	8	1		32	37	5	Less Fishkill for 6th = -80
Ave. Class Size	18.67	21.67	22.25	18.8	20.6	22.5	23.5	7					Worley Homes to F. Plains
OAK GROVE	57	66	65	53	56	64	0	37		398			
#Teachers	1.5	3	3	3	3	3	0	4		20.5			
#Rooms	2	3	3	3	3	3	0	4		21	22	1	
Ave. Class Size	19	22	21.67	17.67	18.67	21.33	0	9.25					
SHEAFE ROAD	71	82	97	93	91	77	0	24		535			
#Teachers	2	4	4	4	4	4	0	2	5	29			
#Rooms	2	4	4	4	4	4	0	2		24	25	1	
Ave. Class Size	17.75	20.5	24.25	23.25	22.75	19.25	0	12					
VASSAR ROAD	99	115	89	96	116	0	0	0		515			Vassar becomes K-4
#Teachers	2	5	4	4	5	0	0	0	1	21			Move SC K-1 to Oak
#Rooms	2	5	4	4	5	0	0	0		20	17	-3	Move Comm to Myers
Ave. Class Size	24.75	23	22.25	24	23.2	0	0	0					
TOTALS	723	835	841	849	900	880	439	213		270 Teachers			

Space and Enrollment Chart D - Alternative #2 - Make Kinry 6th Grade Center to WJH - 2 year rollout

11-12 Solution #2 Kinry becomes 6th grade center - final year of rollout

	11-12 Solution #2 Kinry becomes 6th grade center - final year of rollout								Inclusion Teachers	TOTAL	Available		Notes
	K	1	2	3	4	5	6	SC			Rooms	Difference	
BRINKERHOFF	83	97	94	90	93	82	0	38		577			
#Teachers	2	4	4	4	4	4	0	3	1	26			
#Rooms	2	4	4	4	4	4	0	3		25	26	1	
Ave. Class Size	20.75	24.25	23.5	22.5	23.25	20.5	0	12.67					
EVANS	50	59	56	48	63	49	0	32		357			Becomes K-5
#Teachers	1	3	3	2	3	2	0	3		17			6th grade to Kinry
#Rooms	2	3	3	2	3	2	0	3		18	18	0	K was 1.5 teachers / 2 rooms
Ave. Class Size	25	19.67	18.67	24	21	24.5	0	10.67					
FISHKILL	72	84	81	89	85	90	0	12		513			To VW for 6th
#Teachers	2	4	4	4	3	4	0	1	2	24			10 ICT students back to home schools
#Rooms	2	4	4	4	3	4	0	1		22	22	0	3 Myers, 2 Sheafe, 1 Gayhead, 2 Oak, 1 FP, 1 Brinck-3rd grade
Ave. Class Size	18	21	20.25	22.25	28.33	22.5	0	12					
FISHKILL PLAINS	89	104	100	97	126	118	0	12		646			Plus Worley Homes from Myers
#Teachers	2	4	4	4	5	5	0	1	2	27			
#Rooms	2	4	4	4	5	5	0	1		25	27	2	
Ave. Class Size	22.25	26	25	24.25	25.2	23.6	0	12					
GAYHEAD	146	171	165	173	160	212	0	27		1054			
#Teachers	3	7	7	7	7	9	0	3	6	49			
#Rooms	3	7	7	7	7	9	0	3		43	42	-1	
Ave. Class Size	24.33	24.43	23.57	24.71	22.86	23.56	0	9					
KINRY ROAD	0	0	0	0	0	0	395	24		419			Kinry 6th grade center
#Teachers	0	0	0	0	0	0	17	2	1	20			Move Edgehill to Myers
#Rooms	0	0	0	0	0	0	17	2		19	19	0	
Ave. Class Size	0	0	0	0	0	0	23.24	12					
MYERS CORNERS	78	90	82	109	122	131	0	7		619			All of Edgehill to Myers from
#Teachers	2	4	4	5	6	6	0	1	8	36			Vassar / Kinry = avg. +22/grade
#Rooms	2	4	4	5	6	6	0	1		28	37	9	Becomes K-5, 6th to Kinry
Ave. Class Size	19.5	22.5	20.5	21.8	20.33	21.83	0	7					Worley Homes to F. Plains
OAK GROVE	57	67	64	65	54	57	0	37		401			6th to Kinry
#Teachers	1.5	3	3	3	3	3	0	4		20.5			
#Rooms	2	3	3	3	3	3	0	4		21	22	1	
Ave. Class Size	19	22.33	21.33	21.67	18	19	0	9.25					
SHEAFE ROAD	71	83	80	98	96	93	0	24		545			6th to Kinry, not Myers
#Teachers	1.5	4	4	4	4	4	0	2	5	28.5			
#Rooms	2	4	4	4	4	4	0	2		24	25	1	
Ave. Class Size	23.67	20.75	20	24.5	24	23.25	0	12					
VASSAR ROAD	77	89	92	71	74	83	0	0		486			Vassar now K-5
#Teachers	2	4	4	3	3	3	0	0	1	20			Edgehill to Myers = -22/grade
#Rooms	2	4	4	3	3	3	0	0		19	17	-2	6th to Kinry
Ave. Class Size	19.25	22.25	23	23.67	24.67	3	0	0					
TOTALS	723	844	814	840	873	915	395	213		268 Teachers			

Space and Enrollment Chart D - Alternative #2 - Make Kinry 6th Grade Center to WJH - 2 year rollout

	12-13 All Elementaries K-5, Kinry 6th grade Center to WJH								Inclusion		Available		Notes
	K	1	2	3	4	5	6	SC	Teachers	TOTAL	Rooms	Difference	
BRINKERHOFF	83	97	95	95	92	95	0	40		597			
#Teachers	2	4	4	4	4	4	0	3	1	26			
#Rooms	2	4	4	4	4	4	0	3		25	26	1	
Ave. Class Size	20.75	24.25	23.75	23.75	23	23.75	0	13.33					
EVANS	50	59	57	57	50	65	0	32		370			
#Teachers	1	3	3	3	2	3	0	3		18			
#Rooms	1	3	3	3	2	3	0	3		18	18	0	
Ave. Class Size	25	19.67	19	19	25	21.67	0	10.67					
FISHKILL	72	84	83	82	92	88	0	12		513			
#Teachers	1.5	4	4	4	4	3	0	1	2	23.5			To Van Wyck for 6th
#Rooms	2	4	4	4	4	3	0	1		22	22	0	10 ICT students back to home schools
Ave. Class Size	24	21	20.75	20.5	23	29.33	0	12					3 Myers, 2 Sheafe, 1 Gayhead, 2 Oak, 1 FP, 1 Brinck-4th grade
FISHKILL PLAINS	89	104	101	101	96	130	0	12		633			
#Teachers	2	4	4	4	4	5	0	1	2	26			Plus Worley Homes from Myers
#Rooms	2	4	4	4	4	5	0	1		24	27	3	
Ave. Class Size	22.25	26	25.25	25.25	24	26	0	12					
GAYHEAD	146	171	167	167	178	165	0	27		1021			
#Teachers	3	7	7	7	7	7	0	3	6	47			
#Rooms	3	7	7	7	7	7	0	3		41	42	1	
Ave. Class Size	24.33	24.43	23.86	23.86	25.43	23.57	0	9					
KINRY ROAD	0	0	0	0	0	0	413	24		437			
#Teachers	0	0	0	0	0	0	17	2	1	20			Evans, Myers, Oak, Sheafe,
#Rooms	0	0	0	0	0	0	17	2		19	19	0	Vassar to Kinry for 6th grade
Ave. Class Size	0	0	0	0	0	0	24.29	12					
MYERS CORNERS	78	88	87	86	120	121	0	7		587			
#Teachers	2	4	4	4	5	6	0	1	8	34			#s seem too low for Myers
#Rooms	2	4	4	4	5	6	0	1		26	37	11	with addition of Edgehill
Ave. Class Size	19.5	22	21.75	21.5	24	20.17	0	7					Worley Homes to F. Plains
OAK GROVE	57	67	65	65	67	56	0	37		414			
#Teachers	1.5	3	3	3	3	3	0	4		20.5			
#Rooms	2	3	3	3	3	3	0	4		21	22	1	
Ave. Class Size	19	22.33	21.67	21.67	22.33	18.67	0	9.25					
SHEAFE ROAD	71	83	81	81	99	101	0	24		540			
#Teachers	1.5	4	4	4	4	4	0	2	5	28.5			
#Rooms	2	4	4	4	4	4	0	2		24	25	1	
Ave. Class Size	23.67	20.75	20.25	20.25	24.75	25.25	0	12					
VASSAR ROAD	77	94	92	92	72	76	0	0		503			
#Teachers	2	4	4	4	3	3	0	0	1	21			
#Rooms	2	4	4	4	3	3	0	0		20	17	-3	
Ave. Class Size	19.25	23.5	23	23	24	25.33	0	0					
TOTALS	723	847	828	826	866	897	413	215		264.5 Teachers			

Space and Enrollment Chart D - Alternative #2 - Make Kinry 6th Grade Center to WJH - 2 year rollout

13-14 All Elementaries K-5, Kinry 6th grade center to WJH

	13-14 All Elementaries K-5, Kinry 6th grade center to WJH								Inclusion		Available		Notes
	K	1	2	3	4	5	6	SC	Teachers	TOTAL	Rooms	Difference	
BRINKERHOFF	83	97	95	96	98	95	0	41		605			
#Teachers	2	4	4	4	4	4	0	3	1	26			
#Rooms	2	4	4	4	4	4	0	3		25	26	1	
Ave. Class Size	20.75	24.25	23.75	24	24.5	23.75	0	13.67					
EVANS	50	59	57	58	58	51	0	32		365			
#Teachers	1	3	3	3	2	2	0	3		17			
#Rooms	1	3	3	3	2	2	0	3		17	18	1	
Ave. Class Size	25	19.67	19	19.33	29	25.5	0	10.67					
FISHKILL	72	84	83	83	85	95	0	12		514			
#Teachers	1.5	4	4	3	4	4	0	1	2	23.5			To Van Wyck for 6th 10 ICT students back to home schools
#Rooms	2	4	4	3	4	4	0	1		22	22	0	3 Myers, 2 Sheafe, 1 Gayhead, 2 Oak, 1 FP, 1 Brinck-5th grade
Ave. Class Size	24	21	20.75	27.67	21.25	23.75	0	12					
FISHKILL PLAINS	89	104	101	102	104	102	0	12		614			
#Teachers	2	4	4	4	4	4	0	1	2	25			Plus Worley Homes from Myers
#Rooms	2	4	4	4	4	4	0	1		23	27	4	
Ave. Class Size	22.25	26	25.25	25.5	26	25.5	0	12					
GAYHEAD	146	171	167	169	172	183	0	27		1035			
#Teachers	3	7	7	7	7	8	0	3	6	48			
#Rooms	3	7	7	7	7	8	0	3		42	42	0	
Ave. Class Size	24.33	24.43	23.86	24.14	24.57	22.88	0	9					
KINRY ROAD	0	0	0	0	0	0	354	24		378			
#Teachers	0	0	0	0	0	0	17	2	1	20			Evans, Myers, Oak, Sheafe, Vassar to Kinry for 6th grade
#Rooms	0	0	0	0	0	0	17	2		19	19	0	
Ave. Class Size	0	0	0	0	0	0	20.82	12					
MYERS CORNERS	78	88	87	88	88	123	0	7		559			
#Teachers	2	4	4	4	4	5	0	1	8	32			#s seem too low for Myers with addition of Edgehill
#Rooms	2	4	4	4	4	5	0	1		24	37	13	Worley Homes to F. Plains
Ave. Class Size	19.5	22	21.75	22	22	24.6	0	7					
OAK GROVE	57	67	65	66	67	69	0	36		427			
#Teachers	1.5	3	3	3	3	3	0	3		19.5			
#Rooms	2	3	3	3	3	3	0	3		20	22	2	
Ave. Class Size	19	22.33	21.67	22	22.33	23	0	12					
SHEAFE ROAD	71	83	81	82	83	104	0	24		528			
#Teachers	1.5	4	4	4	4	4	0	2	5	28.5			
#Rooms	2	4	4	4	4	4	0	2		24	25	1	
Ave. Class Size	23.67	20.75	20.25	20.5	20.75	26	0	12					
VASSAR ROAD	77	94	92	93	96	74	0	0		526			
#Teachers	2	4	4	4	4	3	0	0	1	22			
#Rooms	2	4	4	4	4	3	0	0		21	17	-4	
Ave. Class Size	19.25	23.5	23	23.25	24	24.67	0	0					
TOTALS	723	847	828	837	851	896	354	215		261.5 Teachers			

Space and Enrollment Chart D - Alternative #2 - Make Kinry 6th Grade Center to WJH - 2 year rollout

14-15 All Elementaries K-5, Kinry 6th grade center to WJH

	Inclusion								Available		Notes	
	K	1	2	3	4	5	6	SC	Teachers	TOTAL		Rooms
BRINKERHOFF	83	97	95	96	99	101	0	41		612		
#Teachers	2	4	4	4	4	4	0	3	1	26		
#Rooms	2	4	4	4	4	4	0	3		25	26	1
Ave. Class Size	20.75	24.25	23.75	24	24.75	25.25	0	13.67				
EVANS	50	59	57	58	60	60	0	32		376		
#Teachers	1	3	3	3	2	2	0	3		17		
#Rooms	1	3	3	3	2	2	0	3		17	18	1
Ave. Class Size	25	19.67	19	19.33	30	30	0	10.67				
FISHKILL	72	84	83	83	86	87	0	12		507		
#Teachers	1.5	4	4	4	4	4	3	0	2	23.5		To Van Wyck for 6th
#Rooms	2	4	4	4	4	4	3	0	1	22	22	0
Ave. Class Size	24	21	20.75	20.75	21.5	29	0	12				
FISHKILL PLAINS	89	104	101	102	105	107	0	12		620		
#Teachers	2	4	4	4	5	5	0	1	2	27		Plus Worley Homes
#Rooms	2	4	4	4	5	5	0	1		25	27	2
Ave. Class Size	22.25	26	25.25	25.5	21	21.4	0	12				
GAYHEAD	146	171	167	169	174	177	0	27		1031		
#Teachers	3	7	7	7	7	7	0	3	6	47		
#Rooms	3	7	7	7	7	7	0	3		41	42	1
Ave. Class Size	24.33	24.43	23.86	24.14	24.86	25.29	0	9				
KINRY ROAD	0	0	0	0	0	0	421	24		445		
#Teachers	0	0	0	0	0	0	17	2	1	20		
#Rooms	0	0	0	0	0	0	17	2		19	19	0
Ave. Class Size	0	0	0	0	0	0	24.76	12				
MYERS CORNERS	78	88	87	88	88	88	0	7		524		
#Teachers	2	4	4	4	4	4	0	1	8	31		#s seem too low for Myers
#Rooms	2	4	4	4	4	4	0	1		23	37	14
Ave. Class Size	19.5	22	21.75	22	22	22	0	7				Worley Homes to F. Plains
OAK GROVE	57	67	65	66	68	69	0	36		428		
#Teachers	1.5	3	3	3	3	3	0	3		19.5		
#Rooms	2	3	3	3	3	3	0	3		20	22	2
Ave. Class Size	19	22.33	21.67	22	22.67	23	0	12				
SHEAFE ROAD	71	83	81	82	85	86	0	24		512		
#Teachers	1.5	4	4	4	4	3	0	2	5	27.5		
#Rooms	2	4	4	4	4	3	0	2		23	25	2
Ave. Class Size	23.67	20.75	20.25	20.5	21.25	28.67	0	12				
VASSAR ROAD	77	94	92	93	96	98	0	0		550		
#Teachers	2	4	4	4	4	4	0	0	1	23		K was 2.5 teachers / 3 rooms
#Rooms	2	4	4	4	4	4	0	0		22	17	-5
Ave. Class Size	19.25	23.5	23	23.25	24	24.5	0	0				
TOTALS	723	847	828	837	861	873	421	215		261.5 Teachers		

ALTERNATIVE #3 –
MAKE ALL DISTRICT ELEMENTARY SCHOOLS K-6, BOTH JUNIOR HIGHS 7-8

Alternative # 3 is entitled: Make all district elementary schools K-6. The details to accomplish this are:

1. Brinckerhoff will become a K-6 school.
2. Evans will stay a K-6 school.
3. Fishkill will no longer go to Myers Corners for 6th grade center. Fishkill will become a K-6 school and go directly to Van Wyck JH.
4. Fishkill Plains will become a K-6 school.
5. Gayhead will become a K-6 school.
6. Kinry Road will remain a 4-6 school, sister school to Vassar.
7. Myers Corners will stay a K-6 school, but will no longer be a 6th grade center.
8. Oak Grove will become a K-6 school.
9. Sheafe Road will become a K-6 school.
10. Vassar Road will stay a K-3 school, with its students going on to 4-6 grades at Kinry.

The attached spreadsheet (Pages 1E – 6E) shows the projected enrollments per school per grade, the number of sections per grade, and the number of available classrooms at each school as determined by a physical count by the Space and Enrollment Committee in January 2010. It also shows the number of teachers needed at each school and in total for Elementary level education each year.

If the Alternative # 3 changes to class configuration are made, and enrollment projections are correct:

1. Brinckerhoff will be short three to five rooms every year through 2014-15.
2. Evans will be short two to three rooms through 2014-15.
3. Fishkill will be short five to six rooms through 2014-15, keeping their modular.
4. Fishkill Plains, which has two spare rooms now, will be short two to three rooms through 2014-15.
5. Gayhead will be short six to eight classrooms through 2014-15, keeping their modulars.
6. Kinry Road will have an extra three to five rooms through 2014-15, with average class sizes.
7. Myers Corners will have increasing numbers of free rooms, starting with eight in 2010-11 and reaching 14 rooms by 2014-15, with average class sizes.
8. Oak Grove will consistently be short one to two rooms through 2014-15.
9. Sheafe Road will be short three to five rooms through 2014-15.
10. Vassar Road, will be short one room in some years, but should have enough rooms other years.
11. Van Wyck will have 16 free rooms – the entire 6th grade wing – plus possibly more in years of low enrollment at the 7th and 8th grade levels.

BENEFITS OF ALTERNATIVE #3

- All WCSD elementary schools will have the same K-6 grade configuration.
- Both Junior High Schools will have the same 7-8 grade configuration.

DRAWBACKS OF ALTERNATIVE #3

- All four elementaries on John Jay side of district do not have enough classrooms.
- Implementing this alternative could require building minimum of 36 classrooms, and would have a significant financial cost.
- This size reconfiguration would require widespread redistricting in lieu of adding classrooms on to certain schools. However, such widespread redistricting is always painful and would result in many objections from the community and parents.
- This alternative moves away from Middle School Model.
- This alternative creates large amounts of extra room at Van Wyck and Myers.
- The committee did not consider alignment of special education classes because so many changes would need to be made, and they would not happen for several years. The Special Education needs of the district would likely change significantly during that time.

FINANCIAL ANALYSIS

If widespread redistricting is not considered for this option, the cost of constructing the required 36 classrooms would be approximately **\$28 million dollars**, plus soft costs such as architect fees, bonding, etc... This preliminary estimate is based on an industry rule of thumb maximum cost of \$780 per square foot for permanent classroom construction, and 1,000 square feet for each of the 36 classrooms needed. Note that modular construction to this degree would not be viable due to the temporary nature of such classrooms.

09-10 Status Quo

	K	1	2	3	4	5	6	SC	Inclusion Teachers	TOTAL	Available Rooms	Difference	5/6/2010 Notes
BRINKERHOFF	82	90	89	77	105	103	0	37		583			
#Teachers	2	4	4	3	5	4	0	3	1	26			
#Rooms	2	4	4	3	5	4	0	3		25	26	1	
Ave. Class Size	20.5	22.5	22.25	25.67	21	25.75	0	12.33					
EVANS	49	49	61	46	43	53	38	32		371			
#Teachers	1	3	3	2	2	2	2	3		18			
#Rooms	1	3	3	2	2	2	2	3		18	18	0	
Ave. Class Size	24.5	16.33	20.33	23	21.5	26.5	19	10.67					
FISHKILL	71	100	82	85	79	80	0	11		508			
#Teachers	2	4	4	4	4	3	0	1	2	24			
#Rooms	2	4	4	4	4	3	0	1		22	22	0	
Ave. Class Size	17.75	25	20.5	21.25	19.75	26.67	0	11					
FISHKILL PLAINS	84	90	115	106	116	71	0	12		594			
#Teachers	2	4	5	5	5	3	0	1	2	27			
#Rooms	2	4	5	5	5	3	0	1		25	27	2	
Ave. Class Size	21	22.5	23	21.2	23.2	23.67	0	12					
GAYHEAD	144	174	154	200	171	177	0	27		1047			
#Teachers	3	7	6	8	7	7	0	3	6	47			
#Rooms	3	7	6	8	7	7	0	3		41	42	1	
Ave. Class Size	24	24.86	25.67	25	24.43	25.29	0	9					
KINRY ROAD	0	0	0	0	116	120	179	12		427			
#Teachers	0	0	0	0	5	5	8	1	1	20			
#Rooms	0	0	0	0	5	5	8	1		19	19	0	
Ave. Class Size	0	0	0	0	23.2	24	22.38	12					
MYERS CORNERS	59	95	99	106	90	108	260	12		829			
#Teachers	1.5	5	4	5	4	4	11	1	8	43.5			
#Rooms	2	5	4	5	4	4	11	1		36	37	1	
Ave. Class Size	19.67	19	24.75	21.2	22.5	27	23.64	12					
OAK GROVE	56	64	52	54	62	77	0	36		401			
#Teachers	1.5	3	3	3	3	3	0	3		19.5			
#Rooms	2	3	3	3	3	3	0	3		20	22	2	
Ave. Class Size	18.67	21.33	17.33	18	20.67	25.67	0	12					
SHEAFE ROAD	70	97	92	88	75	80	0	23		525			
#Teachers	2	5	4	4	3	4	0	2	5	29			
#Rooms	2	5	4	4	3	4	0	2		24	25	1	
Ave. Class Size	17.5	19.4	23	22	25	20	0	11.5					
VASSAR ROAD	98	91	95	99	0	0	0	7		390			
#Teachers	2	5	4	4	0	0	0	1	1	17			
#Rooms	2	5	4	4	0	0	0	1		16	17	1	
Ave. Class Size	24.5	18.2	23.75	24.75	0	0	0	7					
TOTALS	713	850	839	861	857	869	477	209		271 Teachers			

2010-2011 - All Elementaries. K-6; JHS 7-8

	K	1	2	3	4	5	6	SC	Inclusion Teachers	TOTAL	Available Rooms	Difference	Notes
BRINKERHOFF	83	96	88	90	79	108	105	38		687			Add 6th
#Teachers	2	4	4	4	4	5	5	3	1	32			
#Rooms	2	4	4	4	4	5	5	3		31	26	-5	
Ave. Class Size	20.75	24	22	22.5	19.75	21.6	0	12.67					
EVANS	50	57	48	62	47	44	54	32		394			same
#Teachers	1	3	2	3	2	2	3	3		19			
#Rooms	1	3	2	3	2	2	3	3		19	18	-1	
Ave. Class Size	25	19	24	20.67	23.5	22	18	10.67					
FISHKILL	72	83	98	83	87	81	82	12		598			add 6th
#Teachers	2	4	4	4	4	4	4	1	2	29			
#Rooms	2	4	4	4	4	4	4	1		27	22	-5	
Ave. Class Size	18	20.75	24.5	20.75	21.75	20.25	0	12					
FISHKILL PLAINS	85	98	88	116	109	120	73	12		701			add 6th
#Teachers	2	4	4	5	5	5	3	1	2	31			
#Rooms	2	4	4	5	5	5	3	1		29	27	-2	
Ave. Class Size	21.25	24.5	22	23.2	21.8	24	0	12					
GAYHEAD	146	169	170	156	206	176	180	27		1230			add 6th
#Teachers	3.5	7	7	7	8	7	7	3	6	55.5			
#Rooms	4	7	7	7	8	7	7	3		50	42	-8	
Ave. Class Size	20.86	24.14	24.29	22.29	25.75	25.14	25.71	9					
KINRY ROAD	0	0	0	0	102	120	121	12		355			lose Oak 6th
#Teachers	0	0	0	0	6	6	6	1	1	20			Stay 4-6
#Rooms	0	0	0	0	6	6	6	1		19	19	0	Vassar K-3
Ave. Class Size	0	0	0	0	17	20	20.17	12					
MYERS CORNERS	60	69	93	100	109	93	110	12		646			lose Sheafe
#Teachers	1.5	3	4	5	5	4	5	1	8	36.5			Lose Fishk.
#Rooms	2	3	4	5	5	4	5	1		29	37	8	
Ave. Class Size	20	23	23.25	20	21.8	23.25	22	12					
OAK GROVE	57	66	63	53	56	64	79	36		474			add 6th
#Teachers	1.5	3	3	3	3	3	4	3		23.5			
#Rooms	2	3	3	3	3	3	4	3		24	22	-2	
Ave. Class Size	19	22	21	17.67	18.67	21.33	19.75	12					
SHEAFE ROAD	71	82	95	93	91	77	82	24		615			add 6th
#Teachers	2	4	4	4	4	4	4	2	5	33			
#Rooms	2	4	4	4	4	4	4	2		28	25	-3	
Ave. Class Size	17.75	20.5	23.75	23.25	22.75	19.25	20.5	12					
VASSAR ROAD	99	115	89	96	0	0	0	8		407			Stay K-3
#Teachers	2	5	4	4	0	0	0	1	1	17			Kinry 4-6
#Rooms	2	5	4	4	0	0	0	1		16	17	1	
Ave. Class Size	24.75	23	22.25	24	0	0	0	8					
TOTALS	723	835	832	849	886	883	886	213		296.5 Teachers*			*Will be less teachers at VWJH

2011-2012 - All Elementaries. K-6; JHS 7-8

	K	1	2	3	4	5	6	SC	Inclusion Teachers	TOTAL	Available Rooms	Difference	Notes
BRINKERHOFF	83	97	94	89	93	82	110	38		686			add 6th
#Teachers	2	4	4	4	4	4	5	3	1	31			
#Rooms	2	4	4	4	4	4	5	3		30	26	-4	
Ave. Class Size	20.75	24.25	23.5	22.25	23.25	20.5	22	12.67					
EVANS	50	59	56	48	63	49	45	32		402			same
#Teachers	1	3	3	2	3	2	2	3		19			K was 1.5 teachers / 2 rooms
#Rooms	1	3	3	2	3	2	2	3		19	18	-1	
Ave. Class Size	25	19.67	18.67	24	21	24.5	22.5	10.67					
FISHKILL	72	84	81	99	85	90	83	12		606			add 6th
#Teachers	2	4	4	4	4	4	4	1	2	29			
#Rooms	2	4	4	4	4	4	4	1		27	22	-5	
Ave. Class Size	18	21	20.25	24.75	21.25	22.5	20.75	12					
FISHKILL PLAINS	85	100	96	89	120	112	123	12		737			add 6th
#Teachers	2	4	4	4	5	5	5	1	2	32			
#Rooms	2	4	4	4	5	5	5	1		30	27	-3	
Ave. Class Size	21.25	25	24	22.25	24	22.4	24.6	12					
GAYHEAD	146	171	165	172	160	212	179	27		1232			add 6th
#Teachers	3.5	7	7	7	7	9	7	3	6	56.5			
#Rooms	4	7	7	7	7	9	7	3		51	42	-9	
Ave. Class Size	20.86	24.43	23.57	24.57	22.86	23.56	25.57	9					
KINRY ROAD	0	0	0	0	99	105	121	12		337			Lose Oak 6th
#Teachers	0	0	0	0	4	4	5	1	1	15			Stay 4-6
#Rooms	0	0	0	0	4	4	5	1		14	19	5	Vassar K-3
Ave. Class Size	0	0	0	0	24.75	26.25	24.2	12					
MYERS CORNERS	60	70	68	94	103	112	93	12		612			Lose Sheafe
#Teachers	1.5	3	3	4	5	5	4	1	8	34.5			Lose Fishk.
#Rooms	2	3	3	4	5	5	4	1		27	37	10	
Ave. Class Size	20	23.33	22.67	23.5	20.6	22.4	23.25	12					
OAK GROVE	57	67	64	63	54	57	66	36		464			Add 6th
#Teachers	1.5	3	3	3	3	3	3	3		22.5			
#Rooms	2	3	3	3	3	3	3	3		23	22	-1	
Ave. Class Size	19	22.33	21.33	21	18	19	0	12					
SHEAFE ROAD	71	83	80	96	96	93	79	24		622			Add 6th
#Teachers	1.5	4	4	4	4	4	4	2	5	32.5			
#Rooms	2	4	4	4	4	4	4	2		28	25	-3	
Ave. Class Size	23.67	20.75	20	24	24	23.25	19.75	12					
VASSAR ROAD	99	116	108	90	0	0	0	7		420			Stay K-3
#Teachers	2	5	5	4	0	0	0	1	1	18			Kinry 4-6
#Rooms	2	5	5	4	0	0	0	1		17	17	0	
Ave. Class Size	24.75	23.2	21.6	22.5	0	0	0	7					
TOTALS	723	847	812	840	873	912	899	212		290 Teachers*			*Less teachers at VWJH

2012-2013 - All Elementaries. K-6; JHS 7-8

	K	1	2	3	4	5	6	SC	Inclusion Teachers	TOTAL	Available Rooms	Difference	Notes
BRINKERHOFF	83	97	95	95	91	95	85	40		681			Add 6th
#Teachers	2	4	4	4	4	4	4	3	1	30			
#Rooms	2	4	4	4	4	4	4	3		29	26	-3	
Ave. Class Size	20.75	24.25	23.75	23.75	22.75	23.75	21.25	13.33					
EVANS	50	59	57	57	50	65	50	32		420			same
#Teachers	1	3	3	3	2	3	2	3		20			
#Rooms	1	3	3	3	2	3	2	3		20	18	-2	
Ave. Class Size	25	19.67	19	19	25	21.67	25	10.67					
FISHKILL	72	84	83	82	102	88	92	12		615			add 6th
#Teachers	1.5	4	4	4	5	4	4	1	2	29.5			
#Rooms	2	4	4	4	5	4	4	1		28	22	-6	
Ave. Class Size	24	21	20.75	20.5	20.4	22	23	12					
FISHKILL PLAINS	85	100	97	97	91	123	114	12		719			add 6th
#Teachers	2	4	4	4	4	5	5	1	2	31			
#Rooms	2	4	4	4	4	5	5	1		29	27	-2	
Ave. Class Size	21.25	25	24.25	24.25	22.75	24.6	22.8	12					
GAYHEAD	146	171	167	167	177	165	214	27		1234			add 6th
#Teachers	3	7	7	7	7	7	9	3	6	56			
#Rooms	3	7	7	7	7	7	9	3		50	42	-8	
Ave. Class Size	24.33	24.43	23.86	23.86	25.29	23.57	23.78	9					
KINRY ROAD	0	0	0	0	93	102	122	12		329			Lose Oak
#Teachers	0	0	0	0	4	4	5	1	1	15			Stay 4-6
#Rooms	0	0	0	0	4	4	5	1		14	19	5	Vassar K-3
Ave. Class Size	0	0	0	0	23.25	25.5	24.4	12					
MYERS CORNERS	60	70	69	68	97	106	110	12		592			Lose Sheafe
#Teachers	1.5	3	3	3	4	5	5	1	8	33.5			Lose Fishkill
#Rooms	2	3	3	3	4	5	5	1		26	37	11	
Ave. Class Size	20	23.33	23	22.67	24.25	21.2	22	12					
OAK GROVE	57	67	65	65	65	56	59	36		470			Add 6th
#Teachers	1.5	3	3	3	3	3	3	3		22.5			
#Rooms	2	3	3	3	3	3	3	3		23	22	-1	
Ave. Class Size	19	22.33	21.67	21.67	21.67	18.67	19.67	12					
SHEAFE ROAD	71	83	81	81	99	99	95	24		633			Add 6th
#Teachers	1.5	4	4	4	4	4	4	2	5	32.5			
#Rooms	2	4	4	4	4	4	4	2		28	25	-3	
Ave. Class Size	23.67	20.75	20.25	20.25	24.75	24.75	23.75	12					
VASSAR ROAD	99	116	114	114	0	0	0	7		450			Stay K-3
#Teachers	2	5	5	5	0	0	0	1	1	19			Kiniry 4-6
#Rooms	2	5	5	5	0	0	0	1		18	17	-1	
Ave. Class Size	24.75	23.2	22.8	22.8	0	0	0	7					
TOTALS	723	847	828	826	865	899	941	214		289 Teachers*			*Less Teachers at VWJH

2013-2014 - All Elementaries. K-6; JHS 7-8

	K	1	2	3	4	5	6	SC	Inclusion Teachers	TOTAL	Available Rooms	Difference	Notes
BRINKERHOFF	83	97	95	96	98	94	97	41		701			Add 6th
#Teachers	2	4	4	4	4	4	4	3	1	30			
#Rooms	2	4	4	4	4	4	4	3		29	26	-3	
Ave. Class Size	20.75	24.25	23.75	24	24.5	23.5	24.25	13.67					
EVANS	50	59	57	58	58	51	67	32		432			same
#Teachers	1	3	3	3	3	2	3	3		21			
#Rooms	1	3	3	3	3	2	3	3		21	18	-3	K was 2
Ave. Class Size	25	19.67	19	19.33	19.33	25.5	22.33	10.67					
FISHKILL	72	84	83	83	85	105	90	12		614			Add 6th
#Teachers	1.5	4	4	4	4	5	4	1	2	29.5			
#Rooms	2	4	4	4	4	5	4	1		28	22	-6	
Ave. Class Size	24	21	20.75	20.75	21.25	21	22.5	12					
FISHKILL PLAINS	85	100	97	98	100	94	126	12		712			Add 6th
#Teachers	2	4	4	4	4	4	6	1	2	31			
#Rooms	2	4	4	4	4	4	6	1		29	27	-2	
Ave. Class Size	21.25	25	24.25	24.5	25	23.5	21	12					
GAYHEAD	146	171	167	169	172	182	168	27		1202			Add 6th
#Teachers	3	7	7	7	7	8	7	3	6	55			
#Rooms	3	7	7	7	7	8	7	3		49	42	-7	
Ave. Class Size	24.33	24.43	23.86	24.14	24.57	22.75	24	9					
KINRY ROAD	0	0	0	0	116	96	121	12		345			Lose Oak
#Teachers	0	0	0	0	5	4	5	1	1	16			Add K-3
#Rooms	0	0	0	0	5	4	5	1		15	19	4	
Ave. Class Size	0	0	0	0	23.2	24	24.2	12					
MYERS CORNERS	60	70	69	70	70	100	104	12		555			Lose Sheafe
#Teachers	1.5	3	3	3	3	4	4	1	8	30.5			Lose Fishkill
#Rooms	2	3	3	3	3	4	4	1		23	37	14	
Ave. Class Size	20	23.33	23	23.33	23.33	25	26	12					
OAK GROVE	57	67	65	66	67	67	58	36		483			Add 6th
#Teachers	1.5	3	3	3	3	3	3	3		22.5			
#Rooms	2	3	3	3	3	3	3	3		23	22	-1	
Ave. Class Size	19	22.33	21.67	22	22.33	22.33	19.33	12					
SHEAFE ROAD	71	83	81	82	83	102	101	24		627			Add 6th
#Teachers	1.5	4	4	4	4	5	5	2	5	34.5			
#Rooms	2	4	4	4	4	5	5	2		30	25	-5	
Ave. Class Size	23.67	20.75	20.25	20.5	20.75	20.4	20.2	12					
VASSAR ROAD	99	116	114	115	0	0	0	7		451			Add 4-6
#Teachers	2	5	5	5	0	0	0	1	1	19			
#Rooms	2	5	5	5	0	0	0	1		18	17	-1	
Ave. Class Size	24.75	23.2	22.8	23	0	0	0	7					
TOTALS	723	847	828	837	849	891	932	215		289 Teachers*			*Less teachers at VWJH

2014-2015 - All Elementaries. K-6; JHS 7-8

	K	1	2	3	4	5	6	SC	Inclusion Teachers	TOTAL	Available Rooms	Difference	Notes
BRINKERHOFF	83	97	95	96	99	101	97	41		709			Add 6th
#Teachers	2	4	4	4	4	4	4	3	1	30			
#Rooms	2	4	4	4	4	4	4	3		29	26	-3	
Ave. Class Size	20.75	24.25	23.75	24	24.75	25.25	24.25	13.67					
EVANS	50	59	57	58	60	60	52	32		428			same
#Teachers	1	3	3	3	3	3	2	3		21			K was 1.5 teachers / 2 rooms
#Rooms	1	3	3	3	2	3	2	3		20	18	-2	
Ave. Class Size	25	19.67	19	19.33	20	20	26	10.67					
FISHKILL	72	84	83	83	86	87	107	12		614			Add 6th
#Teachers	1.5	4	4	4	4	4	5	1	2	29.5			
#Rooms	2	4	4	4	4	4	5	1		28	22	-6	
Ave. Class Size	24	21	20.75	20.75	21.5	21.75	21.4	12					
FISHKILL PLAINS	85	100	97	98	101	103	97	12		693			Add 6th
#Teachers	2	4	4	4	5	5	4	1	2	31			
#Rooms	2	4	4	4	5	5	4	1		29	27	-2	
Ave. Class Size	21.25	25	24.25	24.5	20.2	20.6	24.25	12					
GAYHEAD	146	171	167	169	174	177	185	27		1216			Add 6th
#Teachers	3	7	7	7	7	7	8	3	6	55			
#Rooms	3	7	7	7	7	7	8	3		49	42	-7	
Ave. Class Size	24.33	24.43	23.86	24.14	24.86	25.29	23.13	9					
KINRY ROAD	0	0	0	0	118	120	123	12		373			Lose Oak
#Teachers	0	0	0	0	5	5	5	1	1	17			Add K-3
#Rooms	0	0	0	0	5	5	5	1		16	19	3	
Ave. Class Size	0	0	0	0	23.6	24	24.6	12					
MYERS CORNERS	60	70	69	70	72	73	97	12		523			Lose Sheafe
#Teachers	1.5	3	3	3	3	3	5	1	8	30.5			Lose Fishkill
#Rooms	2	3	3	3	3	3	5	1		23	37	14	
Ave. Class Size	20	23.33	23	23.33	24	24.33	19.4	12					
OAK GROVE	57	67	65	66	68	69	69	36		497			Add 6th
#Teachers	1.5	3	3	3	3	3	3	3		22.5			
#Rooms	2	3	3	3	3	3	3	3		23	22	-1	
Ave. Class Size	19	22.33	21.67	22	22.67	23	23	12					
SHEAFE ROAD	71	83	81	82	85	86	104	24		616			Add 6th
#Teachers	1.5	4	4	4	4	4	5	2	5	33.5			
#Rooms	2	4	4	4	4	4	5	2		29	25	-4	
Ave. Class Size	23.67	20.75	20.25	20.5	21.25	21.5	20.8	12					
VASSAR ROAD	99	116	114	115	0	0	0	7		451			Add 4-6
#Teachers	2	5	5	5	0	0	0	1	1	19			
#Rooms	2	5	5	5	0	0	0	1		18	17	-1	
Ave. Class Size	24.75	23.2	22.8	23	0	0	0	7					
TOTALS	723	847	828	837	863	876	931	215		289 Teachers*			*Less teachers at VWJH

SUMMARY

At this point in time, the committee has provided three alternatives for consideration. It must be noted that information regarding the status quo is also provided and could technically serve as another alternative.

The committee is confident in Alternative # 1 as the most viable option to achieve district goals. However, the Board of Education, of course, will deliberate on this report. If additional information is required, the committee stands ready to continue this work.